

LMC4P / LMC4H

653cc SUBARU GASOLINE / 48 VOLT ELECTRIC



unit shown with standard PREDATOR package accessories



NOTE:

Some part numbers vary by serial number.
The serial number is located on a brass tag
beneath the dump bed on the driver side.

pub. 06/19/17

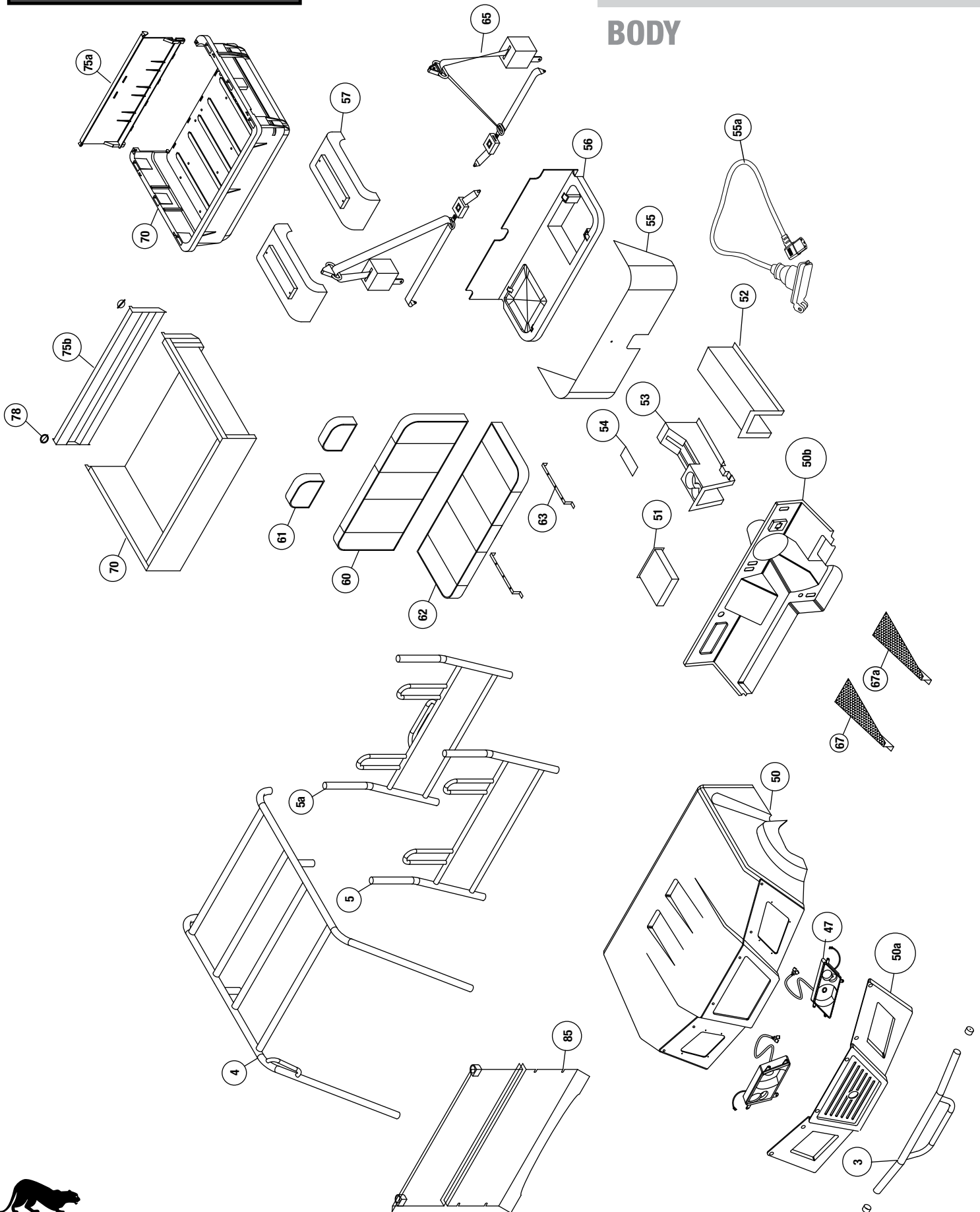


PREDATOR

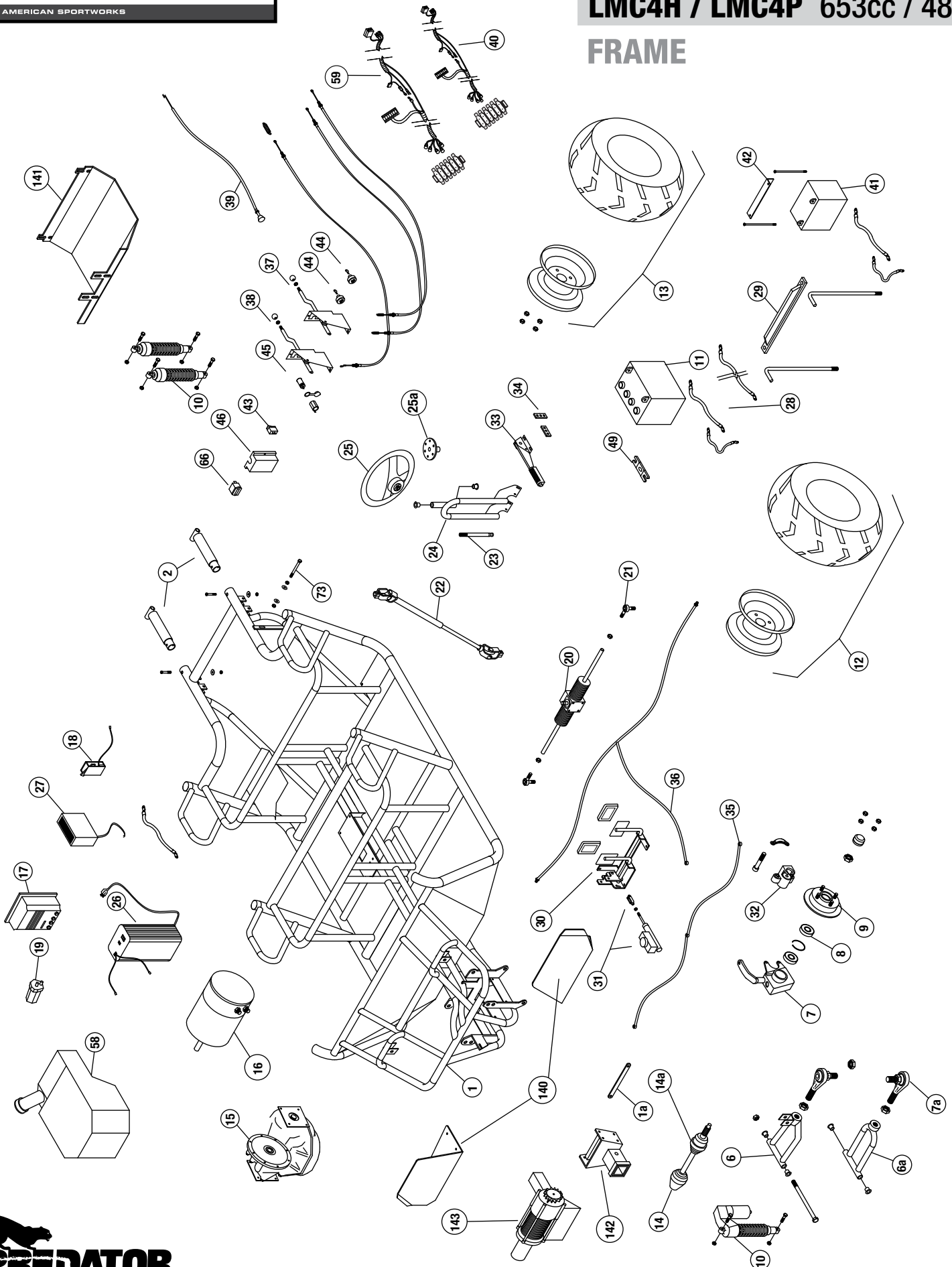
GAS / ELECTRIC HYBRID 4 WHEEL DRIVE CREW CAB UTILITY VEHICLE

ILLUSTRATED PARTS LIST

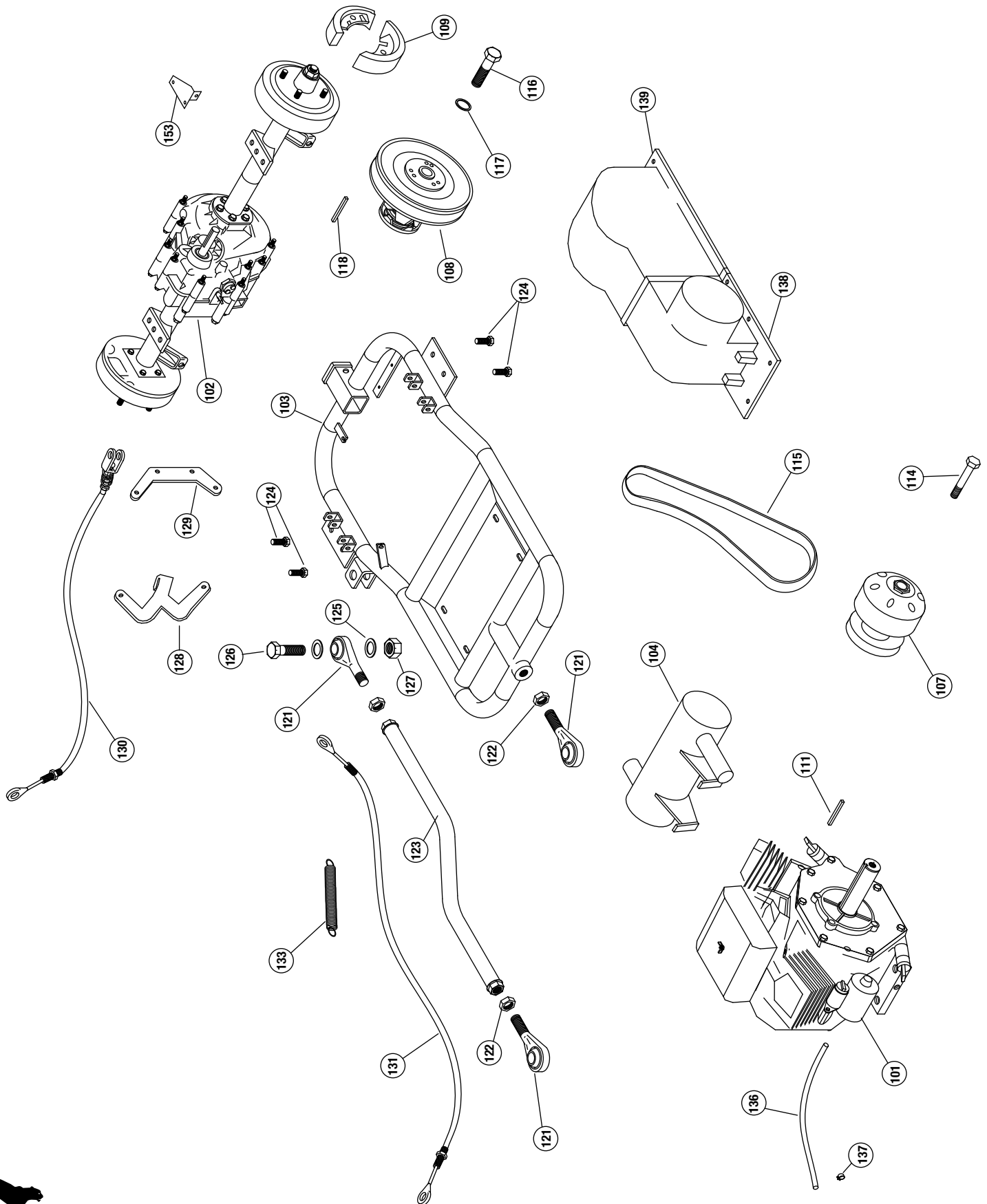
BODY

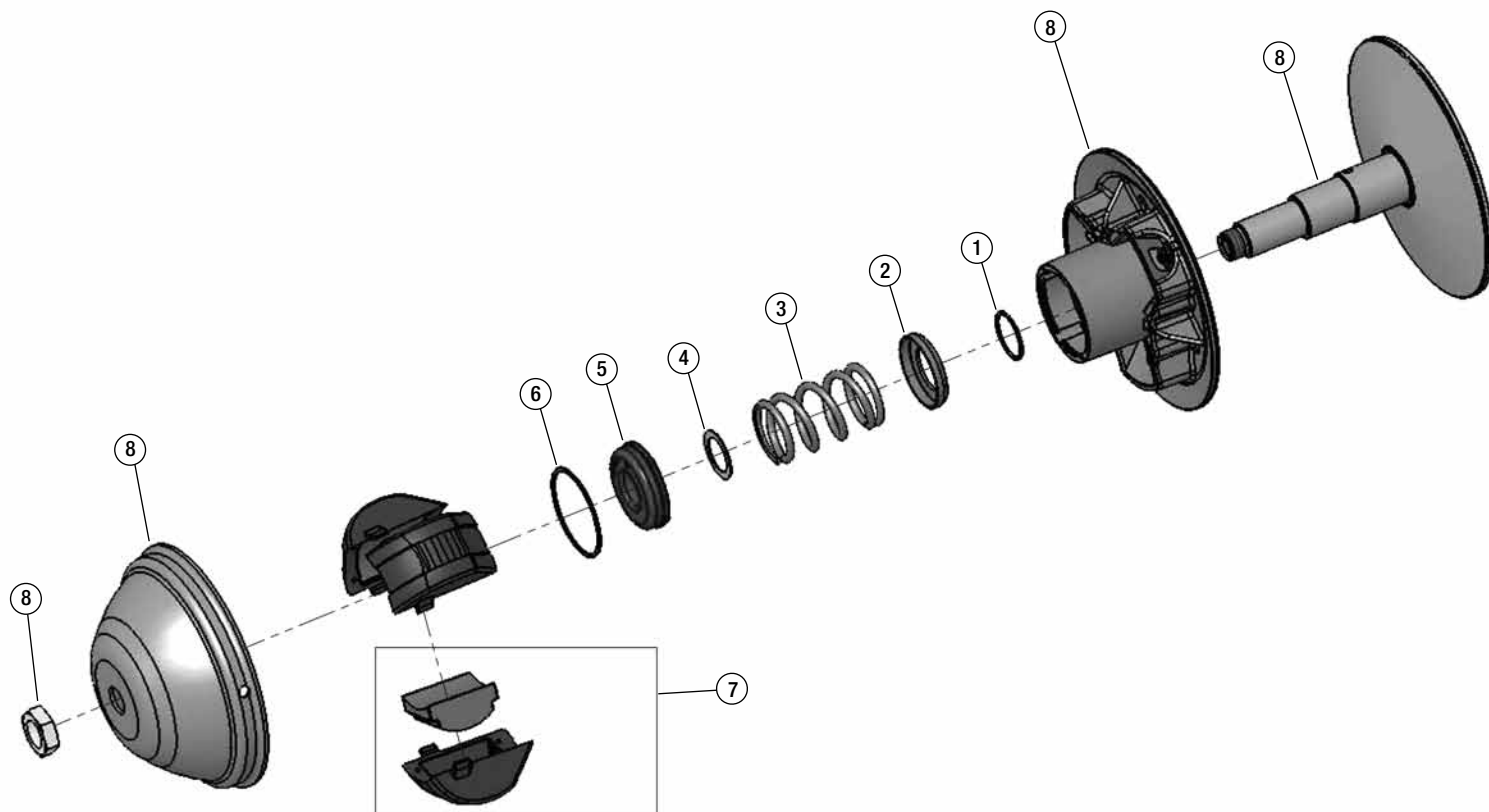


FRAME



DRIVETRAIN

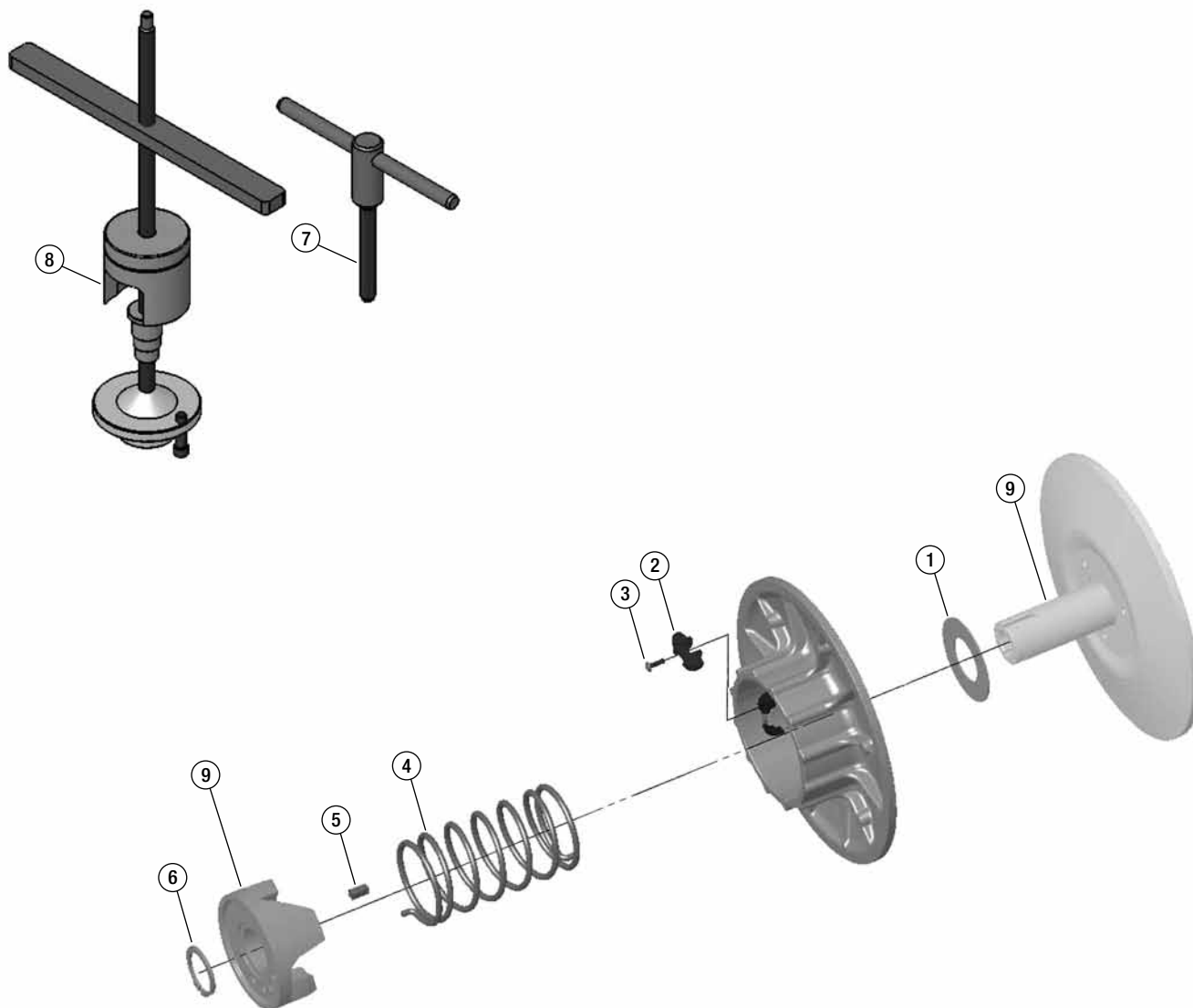




Ref#	Part#	Description	Qty
1	16374	WASHER	1
2	16375	SPRING GUIDE	1
3	16376	SPRING	1
4	16377	SHIM	1
5	16378	EXTERNAL BUSHING	1
6	16379	INTERNAL SNAP RING	1
7	16380	CENTRIFUGAL MASS	3
8	2-20662	THIS PART IS ONLY AVAILABLE WITH THE ENTIRE ASSEMBLY	



ENTIRE ASSEMBLY (2-20662)



Ref#	Part#	Description	Qty
1	16381	WASHER	1
2	16382	CAM SHOE	3
3	16383	SCREW	3
4	16384	SPRING	1
5	16385	KEY	1
6	16386	SNAP RING	1
7	16387	DISASSEMBLY TOOL	1
8	16388	FLANGE SPREADER	1
9	2-20661	THIS PART IS ONLY AVAILABLE WITH THE ENTIRE ASSEMBLY	



ENTIRE ASSEMBLY (2-20661)

REFERENCE NUMBER	PART NUMBER	PART DESCRIPTION	QUANTITY REQUIRED
1	-	Frame, Crew Cab Hybrid	
1a	2-18158	Tie Bar (Metal strip to connect A-arm mount front)	
2	2-45401	Rear Frame Stub	
3	2-45439	Landmaster Front Bumper	1
-	2-50167	bolt, 5/16 x 2	4
-	2-50007	nut, 5/16 nylock	4
-	2-50702	bent washer 5/16	4
-	2-70210	1.75" Round Tubing Plug	2
4	2-45452	Crew Brushguard Roof	
5	2-45411	brshgrd seat back - black	1
-	2-50172	5/16 x 2" USS Socket Head bolt	2
-	2-50007	nut, 5/16 nylock	2
-	2-50702	bent washer 5/16	2
5a	2-45453	brshgrd seat back with cupholder, CW – Front - black	1
-	2-50172	5/16 x 2" USS Socket Head bolt	2
-	2-50007	Nut, 5/16 nylock	2
-	2-50702	Bent washer 5/16	2
6	2-45463	Upper A-Arm, Hybrid	
6a	2-45464	Lower A-Arm, Hybrid	
7	2-40564	Spindle Welded LEFT, Hybrid	
7a	2-40565	Spindle Welded RIGHT, Hybrid	
7b	2-10598	Heim Joint 3/4" Studded	
8	2-25021	Front Spindle Bearing	
-	2-25022	Snap Ring	
9	2-25011	Hub/8.75" Rotor 4x4	
-	2-25018	Wheel stud, 1/2 -20 X 1 5/8"	
-	2-30623	Metal Dust Cap (Front only)	
-	2-50060	Lug nuts, 1/2"	
10	2-70305	Reservoir Shocks (Front Hybrid)	
10a	2-14535	Shocks, Heavy Duty (yellow/chrome)	
-	2-50400	Bolt 10mm x 40mm	
-	2-50065	Nut 10mm nylock	
11	15165	12v Batteries, Hybrid	
12	----->	Front Rim/Tire Assembly, UTV 25/11-12" (Left #2-30149 / Right #2-30150)	
-	2-30199	Tire Only	
-	2-30481-B	Rim Only	
13	----->	Rear Rim/Tire Assembly, UTV 25/11-12" (Left #2-30149 / Right #2-30150)	
-	2-30199	Tire Only	
-	2-30481-B	Rim Only	
14	2-20871	CV Axle, Hybrid	
14a	----->	CV Boot (P/N 2-20868 fits 2.5" bell / 2-20873 fits 3" bell) 1 per half shaft	
-	16175	Circlip, 24.5 x 1.6	2
15	2-20867	Dana Electric Transaxle	
16	2-20123	48V Electric Motor	
-	2-20121	Speed Sensor for 48v motor	
17	2-70111	Controller (Curtis)	
18	2-70112	Potentiometer (Curtis) (mfg part# 14281008)	
19	2-70120	Contacto (Curtis)	
20	2-10521	Rack & Pinion	
21	2-10589	Rod End	

NOTE: parts denoted as left or right hand are from driver's point of view.

REFERENCE NUMBER	PART NUMBER	PART DESCRIPTION	QUANTITY REQUIRED
22	2-10526	Steering Shaft with U-Joints	
23	2-10520	Steering Stub Shaft Landmaster Double Splined	
24	2-45462	Steering Support	
25	14845	Steering Wheel (used for serial number 48598 and above)	1
-	14846	Center cap (used for serial number 48598 and above)	1
-	2-10508	Center cap (used for serial number 48598 and below)	1
-	2-10509	Steering Wheel (used for serial number 48598 and below)	1
25a	2-18169	Steering Washer	1
26	2-70121	Charger, Delta Q	
27	2-70115	Converter	
28	2-69906	Battery Cable Red 10.5"	
-	2-70002	Battery Cable Red 17"	
-	2-70010	Battery Cable Black 24"	
-	2-70009	Battery Terminal Cover (rubber)	
29	-	Battery Strap, Hybrid (plastic)	
30	2-42106	Pedal Assembly, Hybrid	1
-	2-70261	Pedal cover, rubber	2
31	2-11120	Master Cylinder	
32	2-11124	Brake Caliper	
-	2-11168	Brake mount pins	
-	2-11169	Brake retaining clips	
-	2-11167	Brake Pads	
33	2-11127	Parking Brake	
34	2-18038	Brake Spreader	
35	2-11135	Brake Hose, Front	
36	2-11141	Brake Hose, Rear	
-	2-11137	Banjo bolt- brake line	
-	2-11138	Brake line crush washer	
37	2-45522	Shifter Assembly (knob only #2-11093)	
38	2-11086	Differential Control Assembly (knob only #2-11092)	
39	2-11017	Choke Cable	
40	2-70148	Wire harness - Crew	
40a	2-70094	Key Switch Adapter Harness	
41	2-70000	Battery, U1L-8250-UTV	
42	2-45414	Battery Strap, U1L-8250-UTV	
43	2-70066	Headlight switch Switches, (Headlights, 48V On/Off, Fwd/N/Rev, Drive/Regen)	
43a	2-70071	48V On/Off Switch	
43b	2-70119	Forward/Neutral/Reverse Switch	
43c	2-70069	Drive/Regen Switch	
44	2-70058	Key Switch (keys included) USED ON VEHICLES MANUFACTURED BEFORE SERIAL NUMBER 58843	
-	2-70060	Key USED ON VEHICLES MANUFACTURED BEFORE SERIAL NUMBER 58843	1
-	2-70093	Key Switch for 653cc engine (keys included) USED ON VEHICLES MANUFACTURED AFTER SERIAL NUMBER 58843	
-	2-70092	Key set for 653cc engine (includes 2 keys) USED ON VEHICLES MANUFACTURED AFTER SERIAL NUMBER 58843	
-	2-70059	Key Switch Electric 48V	
45	2-70080	12v Accessory Plug	
-	2-70081	12v Accessory Plug Cap	
46	2-18500	Terminal Block Cover (plastic)	
47	SEE LAST PAGE FOR HEADLIGHT INFORMATION		
49	2-70020	500 Amp Fuse	
50	2-18344	Hood LM, Camo	

NOTE: parts denoted as left or right hand are from driver's point of view.

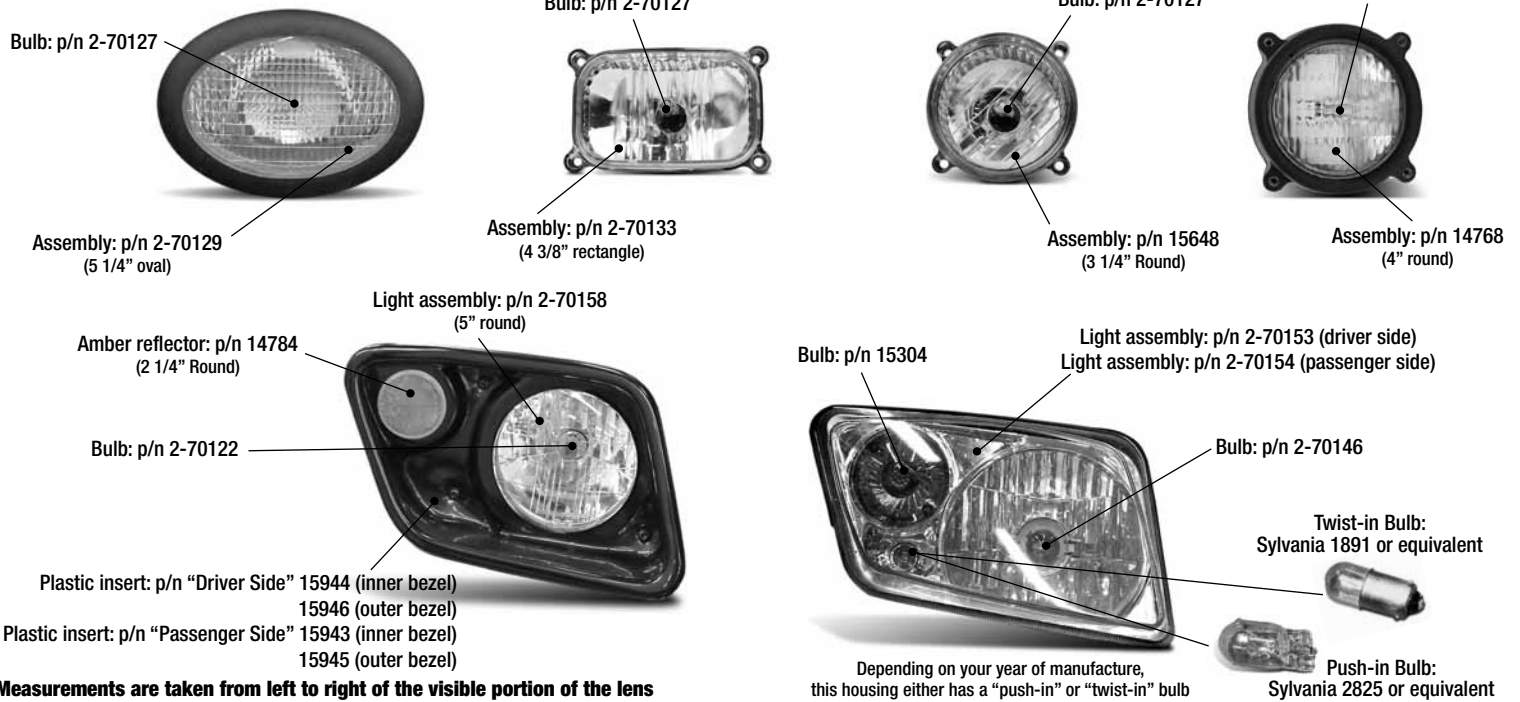
REFERENCE NUMBER	PART NUMBER	PART DESCRIPTION	QUANTITY REQUIRED
-	2-18334	Hood LM, Red	
-	15977	Hood LM, "Spencer" Green	
-	2-18342	Hood LM, White	
50a	2-18341	UTV Grille LM Black	
50b	15979	UTV Dash LM Black	
51	2-18309	Glove Box	
52	2-18089	Center Console, Rear	1
-	2-50624	Screw, #10 x 3/4 hex - black	
53	2-18306	Center Console, Front	
54	2-18316	Access Cover, Center Console	
55	2-18305	Plastic, Seat Bottom Wrap	
56	2-18355	Under Seat Storage Box	
57	2-18303	Rear Fenders - Universal	2
58	2-55069	Fuel Tank, Flambeau (used on units BEFORE serial number 58908)	1
-	2-55077	Fuel Tank, QMI (used on units AFTER serial number 58908)	1
-	15698	Clamp, 3/8 Spring Tube	1
-	2-65503	UTV, Fuel Line 3/16" black	1
-	2-55063	Elbow Fuel Inlet with #200 Mesh Screen	1
-	2-55062	Fuel Fitting Grommet	1
-	2-55073	Fuel Tank Cap (used with Flambeau fuel tank)	1
-	2-55066	Fuel Tank Cap (used on units AFTER serial number 58908 with QMI opaque fuel tank)	1
-	2-55071	Fuel Tank Straps	2
-	2-50010	Nut, 3/8 Nylock	4
-	2-50740	Washer, 3/8 Flat	4
59	2-70156	Electric Wiring Harness for Crew Hybrid	
60	-->	Seat back – 43 ½ x 17 ½ – BLACK & GREY (2-10771) / BLACK ONLY (2-10754)	2
61	-->	Headrest – 9 x 6 ½ – BLACK & GREY (2-10773) / BLACK ONLY (2-10803)	4
62	-->	Seat bottom – 43 ½ x 17 ½ – BLACK & GREY (2-10772) / BLACK ONLY (2-10755)	2
63	2-45416	Seat Bar	
64	2-18392	Battery Enclosure, Hybrid	
65	14786	Seatbelt, retractable without sleeve	4
-	8375	Seatbelt plastic sleeve - 7" length	4
-	2-50025	7/16 Nylock	8
66	2-70113	Charge Gauge	
67	2-18033	Shaft guard, Front	1
-	2-50163	bolt, 5/16 x 3/4" NC	3
-	2-50005	Nut, 5/16 keps	4
-	2-50171	Bolt, 5/16 x 3 3/4" USS	1
-	2-45506	Drive Shaft Cover Spacer - Black	1
67a	2-18147	Shaft guard, Rear	1
-	2-50163	bolt, 5/16 x 3/4" NC	-
-	2-50005	Nut, 5/16 keps	-
-	2-50171	Bolt, 5/16 x 3 3/4" USS	-
-	2-45506	Drive Shaft Cover Spacer - Black	-
70	2-45424	Dump Bed UTV STEEL	
70	2-18356	Dump Bed UTV STRUCTURAL FOAM POLYURETHANE	1
-	2-50255	5/8 x 4" bolt Zinc plate	2
-	2-50015	5/8 nylock	2
-	2-18413	Bed Bumper 3/8" Rubber	2
73	2-50208	Bed Latch Bolt, 3/8" x 2 1/2"	

NOTE: parts denoted as left or right hand are from driver's point of view.

REFERENCE NUMBER	PART NUMBER	PART DESCRIPTION	QUANTITY REQUIRED
75a	2-18357	Dump Bed Tailgate UTV STRUCTURAL FOAM POLYURETHANE	1
75b	2-45425	Dump Bed Tailgate UTV STEEL	1
-	2-50152	Bolt, 5/16-18 X 1 Carriage	2
-	2-50701	Washer, 5/16 SAE Flat	4
-	2-50007	Nut, 5/16in Nylock	2
80	2-55024	Black Diamond Plate Aluminum Roof Kit (standard accessory on LMC4P)	1
-	2-50846	Clamp-Tube-vinyl coated 1-1/4"	12
-	2-50087	bolt, 1/4" x 1	12
-	2-50717	1/4" SAE Flat washer	12
-	2-50001	nut, 1/4" nylock	12
85	2-18411	Windshield, Clear	
101	2-20019	Engine, Subaru V-Twin 653cc	
102	2-20838	Dana Transaxle	
103	2-45505	Swing arm 650 4x4	
104	2-55043	Muffler 653cc Subaru	
107	2-20662	TC, Driver CV Tech (parts list on page 5)	
108	2-20661	TC, Driven 10.25" CV Tech (parts list on page 6)	
109	2-11173	Brake Shoes - Rear UTV - Dana	
110	2-50745	1" I.D. Spacer Washer	
111	2-10190	3/16 x 1/4 x 1-1/2" Keystock (for use with CV Tech driver pulley)	
112	2-50742	3/8" I.D. Spacer Washer	
113	2-50741	3/8" Lock Washer	
114	2-50222	3/8 x 3 1/2" Bolt Hex Hd NF	
115	2-20698	Belt, CV Tech Power Block	
116	2-50239	Bolt 1/2"x 2" SAE	
117	2-50722	1/2" Lock Washer	
118	2-10191	3/16 x 3/16 x 3-1/4" Keystock (for use with CV Tech driven pulley)	
121	2-10583	Rod End Sphcl-UTV (4681-MPM-12)	
122	2-50021	3/4" Jam nut SAE	
123	2-42093	Panhard bar, CW 4x4 - black	
124	2-50206	Bolt, 3/8"x 1"	
125	2-50730	3/4" Spacer Washer	
126	2-50280	3/4"x 2.5" SAE bolt	
127	2-50020	3/4" SAE nylock	
128	2-18012	Shifter lever, CW - black	
129	2-18011	Shifter cable mount, CW - black	
130	2-11020	Parking Brake Cables 4x4	
131	2-11016	Throttle Cable, UTV Gas	
-	2-11014	Throttle Cable 48V	
133	2-11804	Spring #80704 Black painted	
136	2-65500	Fuel hose 3/16" dia - 24"	
137	2-50849	Hose clamps - small	
138	2-18320	Belt Guard Plastic 650 UTV - Front	
139	2-18324	Belt Guard Plastic 650 UTV - Rear	
140	2-55044	CV Guards (standard accessory on LMC4P)	
141	2-55011	X-Large Skid Plate (standard accessory on LMC4P)	
142	2-40729	4x4 Hitch Kit (standard accessory on LMC4P)	
143	2-55075	Winch Kit (standard accessory on LMC4P)	

NOTE: parts denoted as left or right hand are from driver's point of view.

HEADLIGHT REPLACEMENT BULBS AND ASSEMBLIES FOR ASW UTILITY VEHICLES



7625 DiSalle Boulevard
Fort Wayne IN 46825

62194 Commercial Street
Roseland, LA 70456

Toll Free 800-643-7332
Fax 800-399-1399
www.amsportworks.com