

Congratulations on the purchase of your Snow Plow Kit! Carefully read these instructions and familiarize yourself with components before starting the assembly process.



Use of this Snow Plow requires a winch (not included). Please call 1-800-643-7332, visit our website at www.amsportworks.com, or your local dealer, to purchase a winch kit or to see the full selection of accessories available for your vehicle.

WARNING

Wear proper eye protection during the uncrating and assembly process to avoid potential eye injuries.

I - Unpacking the Plow

Ensure that you have received (2) packages **Push Tube Assembly** and **Blade Assembly**

II - Plow Assembly

Rotation Lever – The rotation lever is shipped disconnected from the push tube assembly and will require installation as follows:

- 1 Install lever as shown in figure 1 by attaching the spring to both the lever and the push tube assembly
- 2 Install the cross bolt and spacer as shown and tighten

Blade Mounting – The blade assembly will need to be mounted to the push tube as follows:

- 1 Align push tube and blade as shown in figure 2.
- 2 Install the pre-assembled hardware such that the spacer is on the inside of the plow brackets with flat washers under the bolt head and under the nut as shown in figure 3.
- 3 Ensure that the stop blocks are aligned such that the plow fully returns to the upright position.

Trip Spring Mounting – After the blade has been mounted to the push tube assembly, the (2) trip springs will need to be installed:

- 1 Install lower spring brackets as shown in figure 4. Brackets should be snug, but still allow for rotation on the bolt.
- 2 Loosen the eye bolt such that it is extended towards the plow as far as possible.
- 3 Install trip spring to lower spring bracket and to upper blade mount as shown in figure 4.
- 4 Tighten the lower spring bracket eye bolt to pre-load the spring to the desired tension.
- 5 Tighten the jam nut on the eye bolt to prevent rotation.
- 6 Repeat for the second trip spring.

III - A-Arm Mounting Bracket Installation

The A-Arm mounting brackets mount to the underside of the lower A-Arm on the vehicle. These brackets can stay on the vehicle year round, or be removed in the off season.

- 1 The A-Arm mounting brackets should be installed loosely in order to obtain the proper centering of the final mounting assembly as shown in figure 5.
- 2 With the mounting bracket centered on the vehicle, tighten the A-Arm mounting brackets so that they are secured to the vehicle as shown in figure 5.

IV - Blade Attachment

With the A-Arm mount secured, the plow is ready for installation. **NOTE:** Blade assembly mounts to the Shear Pins as shown in figure 6 for quick release. Also note that the Shear Pins are designed to fail if the plow strikes a solid object when plowing. New shear pins are available by calling your local dealer or American Sportworks Customer Service at the number below.

- 1 Depress the latch lever to open the connection jaws as shown in figure 6.
- 2 Engage the plow latch openings on the shear pins and release the latch lever to connect.

INSTALLATION INSTRUCTIONS

50" AND 60" SNOW PLOW KIT - 200 SERIES LUTV AND FULL SIZE UTV

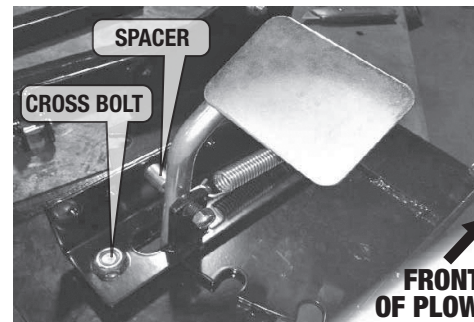
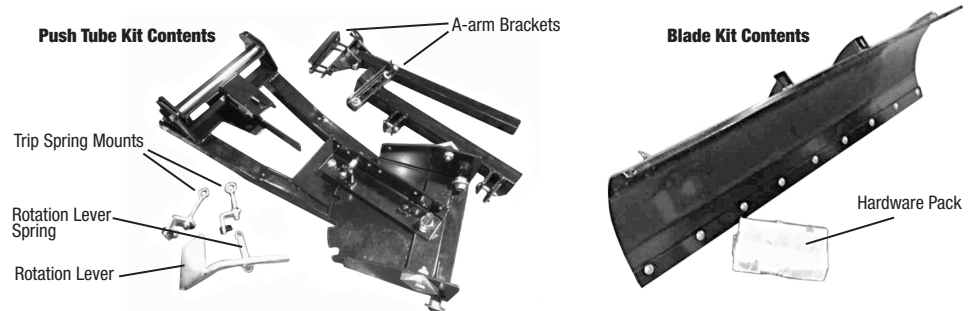


fig. 1

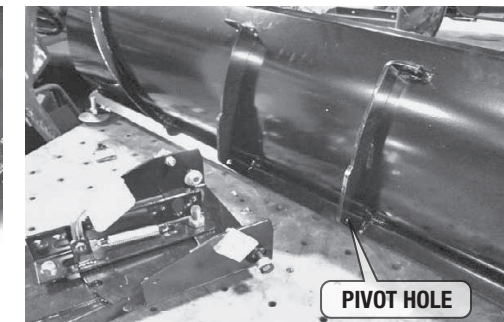


fig. 2

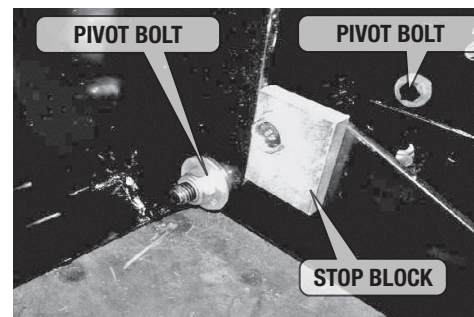


fig. 3

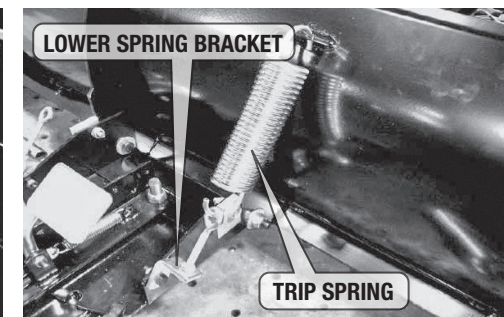


fig. 4

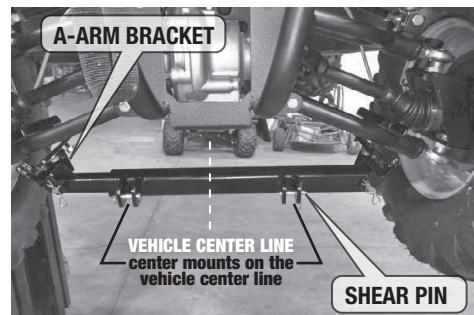


fig. 5

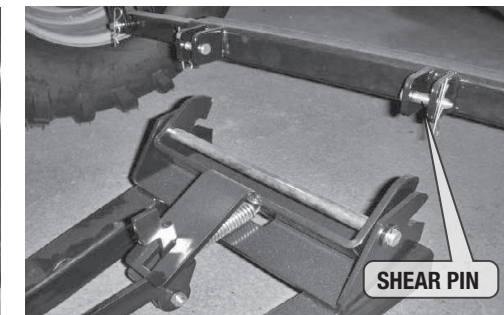
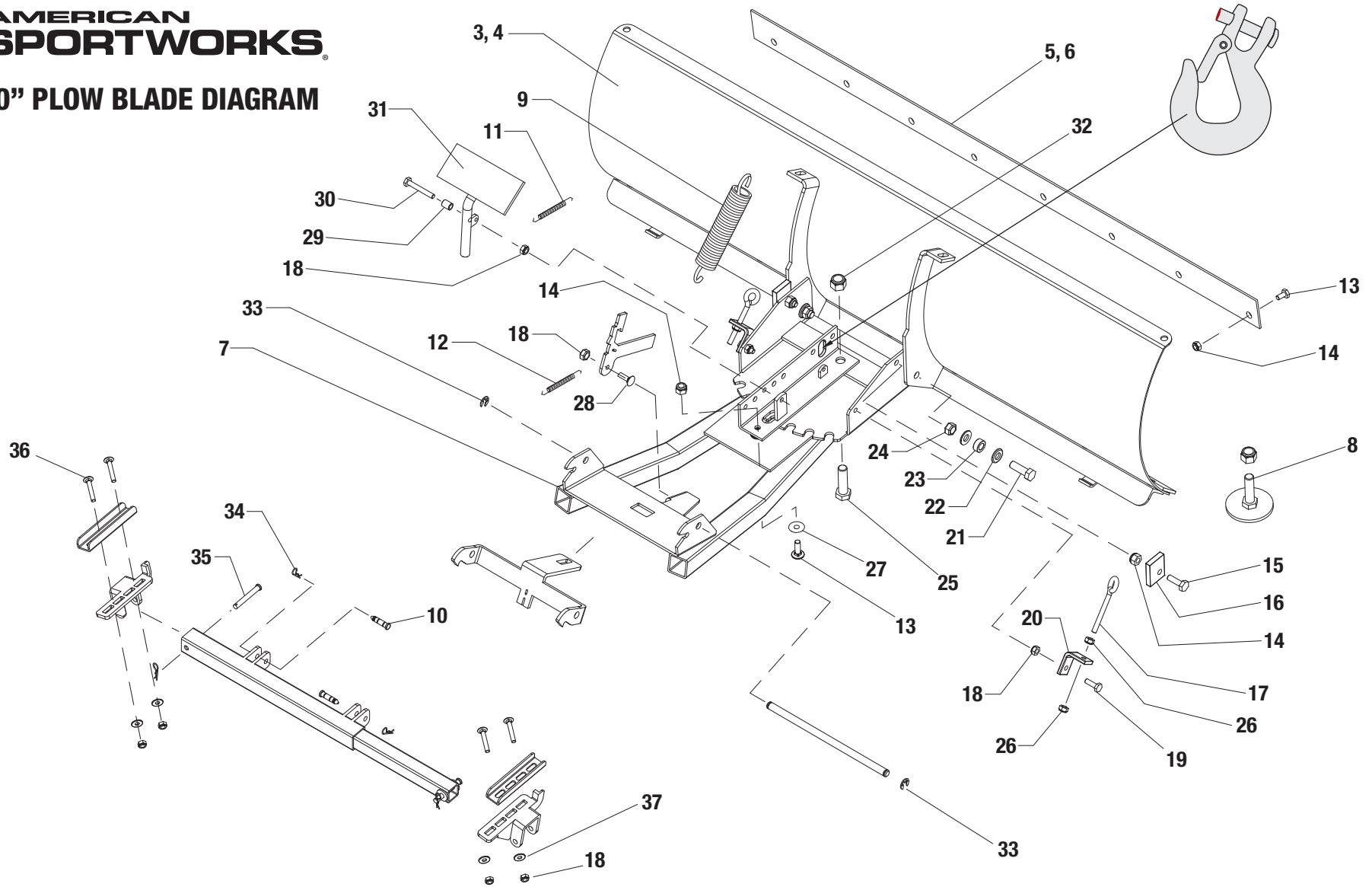


fig. 6

50" / 60" PLOW BLADE DIAGRAM

Page 2 of 2



REF #	PART #	DESCRIPTION	QTY
1	15327	KIT, 50" SNOW PLOW - UNIV MOUNT (ALL PARTS AS SHOWN)	1
2	15333	KIT, 60 SNOW PLOW UNIV MOUNT (ALL PARTS AS SHOWN)	1
3	15328	ASM, BLADE 50" UNIV MOUNT	1
4	15334	ASM, BLADE 60 UNIV MOUNT	1
5	15336	BLADE, SCRAPER 50"	1
6	15335	BLADE, SCRAPER 60"	1
7	15329	ASM, PUSH TUBE UNIV MOUNT	1
8	15354	ASM, SKID PAD - UNIV SNOWPLOW	2
9	15330	SPRING, BLADE TRIP - UNIV MOUNT	2
10	15331	PIN, SHEAR UNIV MOUNT BLADE	2
11	15337	SPRING, ROTATION LEVER	1
12	15348	SPRING, LATCH LEVER - UNIV PLOW	1
13	15410	BOLT, 3/8-16 X 1.75 CARRIAGE G5 ZN	10

REF #	PART #	DESCRIPTION	QTY
14	15411	NUT, 3/8-16 NYLOC G5 ZN	13
15	15392	BOLT, 3/8-16 X 1.25 HHCS G5 ZN	2
16	N/A	STOP, BLADE ROTATION	2
17	15393	BOLT, 5/16-18 X 3.00 EYE ZN	2
18	15394	NUT, 5/16-18 NYLOC G5 ZN	8
19	9176	BOLT, 5/16-18 X 1.00 HHCS G5 ZN	2
20	N/A	BRACKET, TRIP SPRING	2
21	15395	BOLT, 7/16-14 X 1.50 HHCS G5 ZN	2
22	15396	WASHER, 7/16 FLAT AN	4
23	15397	SPACER, 12.7ID X 22.2OD X 9.5 STEEL ZN	2
24	15398	NUT, 7/16-14 NYLOC G5 ZN	2
25	15399	BOLT, 5/8-11 X 2.50 HHCS G5 ZN	1
26	15400	NUT, 5/16-18 G5 ZN	4

REF #	PART #	DESCRIPTION	QTY
27	15401	WASHER, 3/8 FLAT	6
28	15402	BOLT, 5/16-18 X 0.75 CARRIAGE G5 ZN	1
29	15403	SPACER, 8.7ID X 12.7OD X 16 STEEL ZN	1
30	2383	BOLT, 5/16-18 X 2.50 HHCS G5 ZN	1
31	15404	PEDAL, BLADE ROTATION - ZN	1
32	15405	NUT, 5/8-11 NYLOC G5 ZN	1
33	15406	CLIP, 10.0ID X 20.0OD X 1.6 E	2
34	15407	HAIRPIN CLIP, .063 X 1.38 ZN	4
35	15408	PIN, 3/8 X 2.75 CLEVIS ZN	2
36	15409	BOLT, 5/16-18 X 2.50 CARRIAGE G5 ZN	4
37	9060	WASHER, 5/16 FLAT ZN	4