

## Kit PN 19331-R – KIT, BRAKE PAD SERVICE

**SPECIAL REQUIREMENTS:** This Guide covers Standard Cab and Crew Cab Models and services (1) PAIR of brakes

TOOLS REQUIRED		ESTIMATED INSTALL TIME	RECOMMENDED SKILL LEVEL
3/8" Allen Wrench	Jackstands	1 Hour	Intermediate
Pliers	C Clamp		
¾" tire wrench or socket			
Jack			

Before you begin, check the contents of the kit against the parts list below. Immediately contact American Landmaster with any questions or discrepancies. American Landmaster cannot assume responsibility for any damage or injury resulting from incorrect installation of parts. American Landmaster suggests that accessory kits be installed by an authorized American Landmaster dealer or service center.

## !! WARNING !!

**Serious Injury or death could occur!**

- Use proper personal protective equipment during installation of this kit. Use safety glasses.

## PARTS LIST FOR AMERICAN LANDMASTER ACCESSORY KIT

- (4) Brake Pads
- (4) C Clip

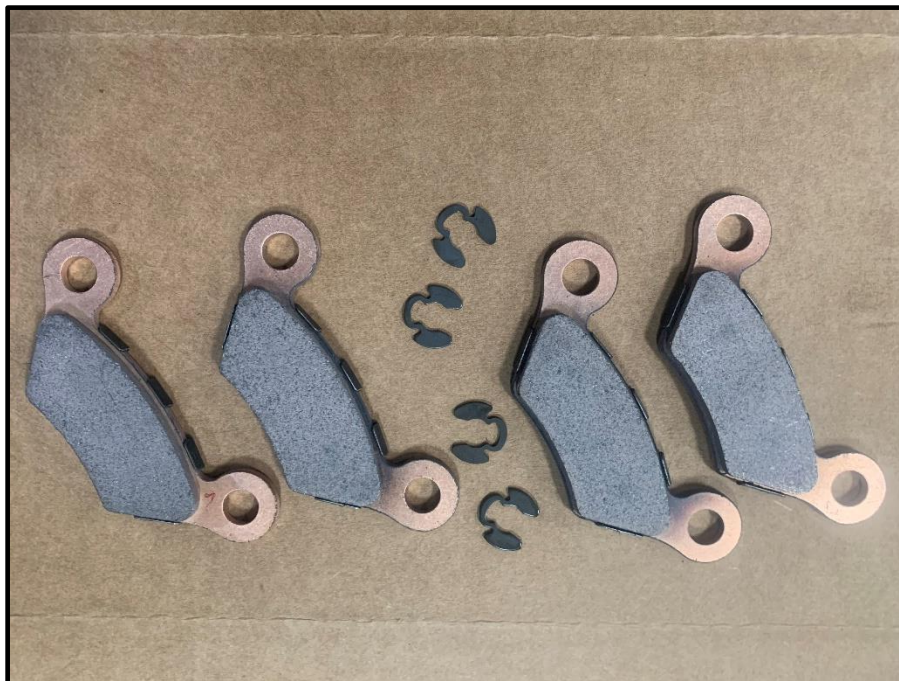


Figure 1 – Kit contents



## ASSEMBLY INSTRUCTIONS:

### Vehicle Preparation:

- 1- Place the vehicle on a level surface such that it can be jacked up and supported with jack stands.
- 2- Loosen lug nuts with a tire iron or 3/4" socket.
- 3- Jack the vehicle up and place jack stands to support the vehicle securely.
- 4- Remove the wheels.
- 5- Inspect the rotor surface for grooves, cracks or damage that would affect brake pad life or function.
- 6- Contact American Landmaster if you require replacement rotors.

### Brake Pad Replacement:

- 1- Using pliers, remove the C Clips from the brake caliper pins and discard. Ref Fig 2.
- 2- Using a 3/8" Allen wrench loosen and remove the (2) caliper pins and set aside for re-use. Ref Fig 3.
- 3- Slide the brake caliper assembly away from the mount, releasing the brake pads from the assembly. Ref Fig 4.
- 4- Using a C Clamp, gently compress the caliper piston back fully to provide assembly clearance for the new brake pads. Ref Fig 5.
- 5- Install (2) brake pads into the caliper as shown and re-install the caliper assembly onto the mount. Ref Fig 6.  
NOTE (ensure brake pads are installed with the lining side facing each other)
- 6- Clean and inspect the brake caliper pins for re-use.
- 7- Re-install the brake caliper pins to secure the caliper on the mount. Tighten to 35-40 lb-ft
- 8- Install new C Clips. Ref Fig 2
- 9- Repeat procedure for each wheel

### Installation Completion

- 1- Reinstall all wheels and torque lug nuts to 120 lb-ft.
- 2- Pump brake pedal several times to seat the brake pads against the rotor.
- 3- Cycle the brakes on initial test ride to ensure proper brake function and to wear in the new brake pads.

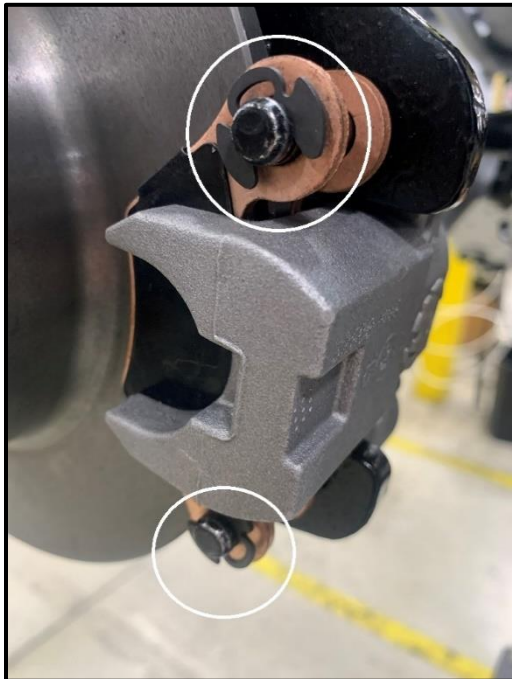


Fig 2 – C Clips

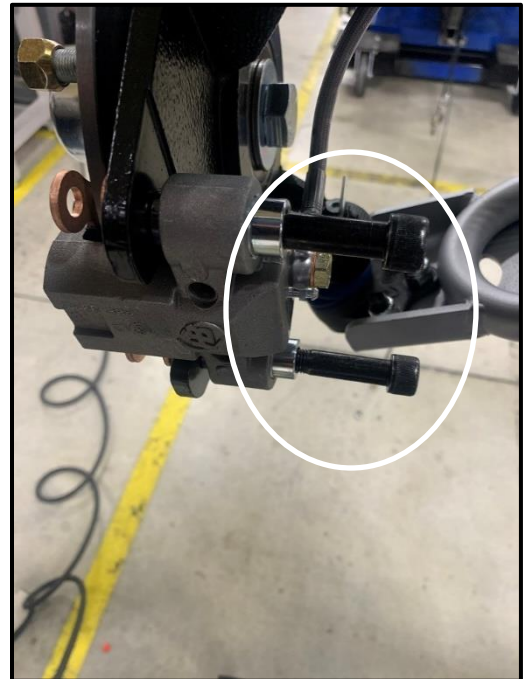


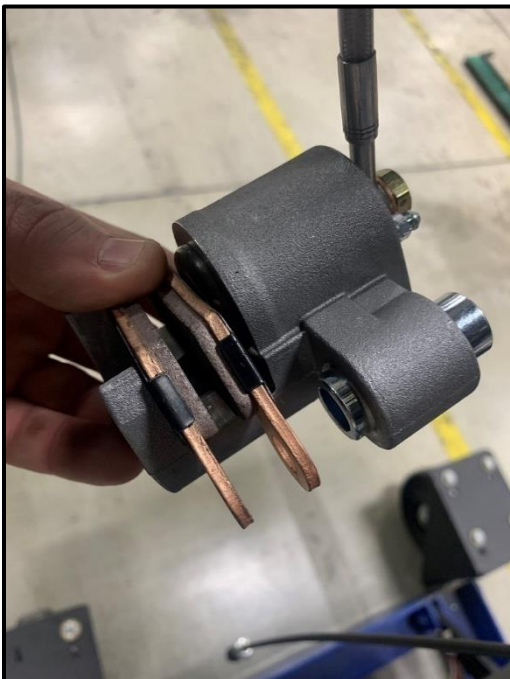
Fig 3 – Caliper Pin Removal



**Fig 4 – Brake Pad Removal**



**Fig 5 – Piston Compression**



**Fig 6 – Pad Installation**