

18735-R Snow Plow 60" - Winch Version (REQUIRES WINCH)

18844-R Snow Plow 50" - Winch Version (REQUIRES WINCH)

19306 – Snow Plow (Winch Version) Installation and Instruction Guide

SPECIAL REQUIREMENTS: Used on both Standard Cab & Crew Cab for MY21 or newer.

TOOLS REQUIRED		ESTIMATED INSTALL TIME	RECOMMENDED SKILL LEVEL
		5 MINUTES	Intermediate

Before you begin, check the contents of the kit against the parts list below. Immediately contact American Landmaster with any questions or discrepancies. American Landmaster cannot assume responsibility for any damage or injury resulting from incorrect installation of parts. American Landmaster suggests that accessory kits be installed by an authorized American Landmaster dealer or service center.

!! WARNING !!

Serious injury or death could occur!

- Use proper personal protective equipment during installation of this kit. Use safety glasses.

PARTS LIST FOR AMERICAN LANDMASTER ACCESSORY KIT

Snow Plow 60" - Winch Version

- (1) Snow Plow (60" Winch Version)
- (2) Receiver Clevis Pin
- (3) Receiver Hair Pin
- (4) Shear Pin
- (5) Hook and Latch Velcro Strap

Snow Plow 50" - Winch Version

- (1) Snow Plow (50" Winch Version)
- (2) Receiver Clevis Pin
- (3) Receiver Hair Pin
- (4) Shear Pin
- (5) Hook and Latch Velcro Strap

Plow Installation Instructions:

- 1- Push the snow plow mount section into the front receiver so that the holes in the mount tube line up with the hole in the vehicle receiver.
- 2- Insert the clevis pin through the holes and capture with the hair pin.



Figure 1: Snow plow mount tube secured to the vehicle front receiver using the clevis pin and hair pin.

- 3- Unlock the winch spool by rotating the red dial clockwise.

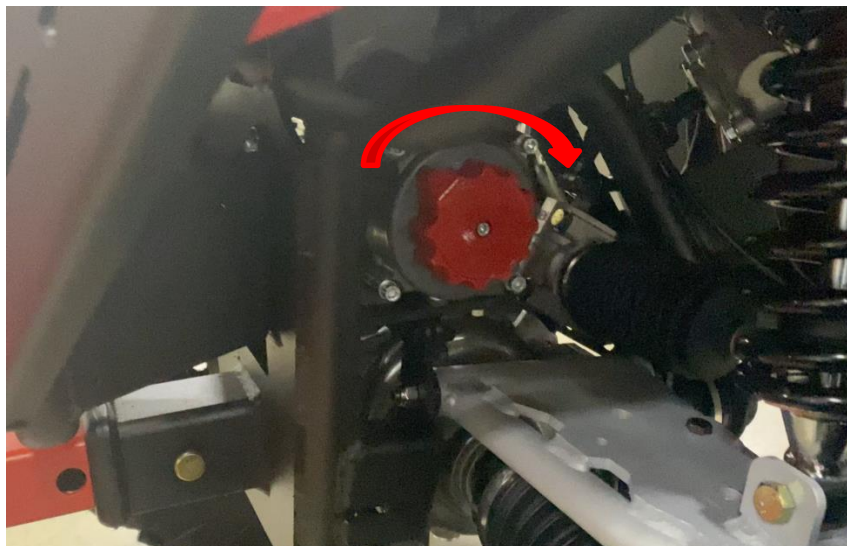


Figure 2: Winch spool release dial.

- 4- Pull out enough cable to run the winch cable over the pulley and clip onto the pinned bracket of the snow plow.



Figure 3: Winch cable routing and clip location.

- 5- Lock the winch spool by rotating the red dial back to its original position.
- 6- Slowly tighten the winch cable by using the winch in switch on the dash of the vehicle.

Additional Plow Instructions:

- 1- To move the plow blade up and down, use the switch on the dash to move the winch in and out with, respectively. **DO NOT DRAW THE WINCH CABLE IN TOO TIGHT OR THE PLOW WILL BE DAMAGED.**
- 2- To move the plow blade left and right, pull the pin out, rotate to the desired position, and insert the pin into the corresponding hole. The pin should be fully engaged when inserted.

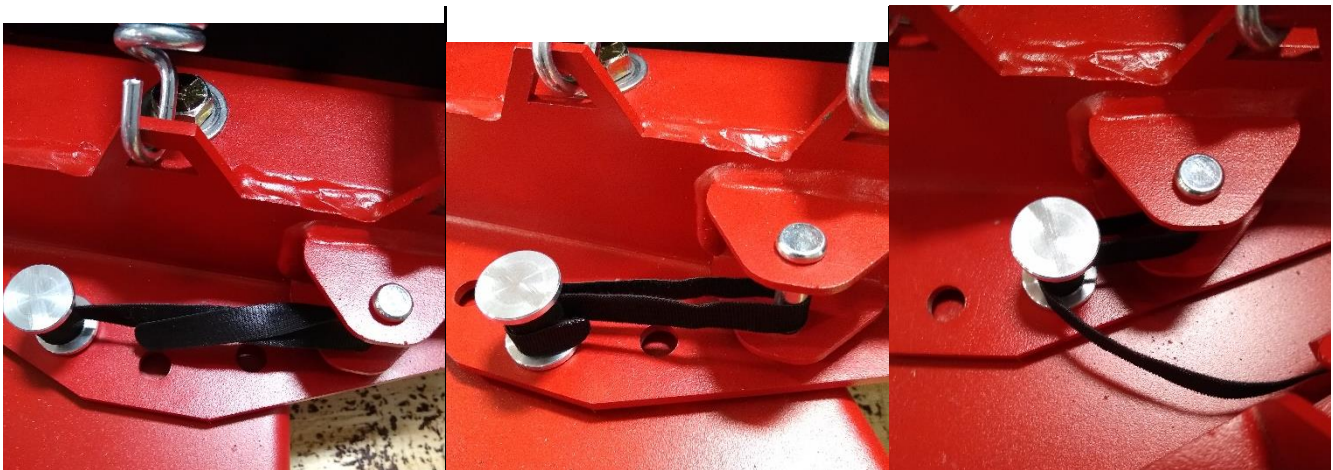


Figure 4: Snow plow pin positions for the left, straight, and right blade positions.