

Kit PN 19153-R – Brake and Tail Light Package for Standard Cab

Kit PN 19309-R – Brake and Tail Light Package for Crew Cab

19151 Installation Guide, Brake and Tail Light Package

SPECIAL REQUIREMENTS: This Guide covers Standard Cab and Crew Cab

TOOLS REQUIRED		ESTIMATED INSTALL TIME	RECOMMENDED SKILL LEVEL
1/2" Wrench	7/16" Socket & Ratchet	2 Hours	Intermediate
1/2" Socket & Ratchet	3/16" Socket & Ratchet		
4 mm Allen Wrench	Carpet Knife		
3/16" Allen Wrench	Wire Cutters		

Before you begin, check the contents of the kit against the parts list below. Immediately contact American Landmaster with any questions or discrepancies. American Landmaster cannot assume responsibility for any damage or injury resulting from incorrect installation of parts. American Landmaster suggests that accessory kits be installed by an authorized American Landmaster dealer or service center.

!! WARNING !!

Serious Injury or death could occur!

- Use proper personal protective equipment during installation of this kit. Use safety glasses.

PARTS LIST FOR AMERICAN LANDMASTER ACCESSORY KIT

(1) Brake Switch	(2) Tail Lights	(2) Tail Light Brackets	
(4) Tail Light Carriage Bolts	(4) Tail Light Nuts	(1) Brake Switch Bracket	
(1) Electrical Harness	(12) Zip Ties	(8) #10 Screw, Black	(8) #10 Nuts, Black

Note: For vehicles with a FLIP SEAT, Kit part number 19305 must be purchased and installed with this kit.

ASSEMBLY INSTRUCTIONS:

Here is the instructional video: In Process



Figure 1 – Kit contents – Brake & Tail Light Package

Preliminary Dis-Assembly Instructions:

- 1- Remove the hood. Remove three screws from each front fender and two screws from the front hood using the 4 mm Allen wrench. Lift the hood off and set aside. If the vehicle has turn signals, disconnect the amber lights by depressing the release tab on each turn signal lamp connector and pull apart. Set the hood aside where it will not be damaged.



Figure 3: Removing Three Fender Fasteners



Figure 4: Removing Two Hood Fasteners

- 2- Remove the Black Instrument panel cover. Unscrew each stainless steel fastener that holds down the black instrument panel cover using a 4 millimeter Allen wrench. Place the fasteners in a small container so they do not get lost. Lift the cover straight up and off the panel. Set the cover aside where it will not get damaged.



Figure 5: Removing Black Instrument Panel Cover

- 3- Remove the tunnel cover. Remove 8 bolts from the cab top side using a 3/16" socket. Clamp nuts are used for easy removal and installation. If you have a crew cab, remove the rear tunnel cover as well.



Figure 6: Tunnel Cover Installed



Figure 6: Tunnel Cover Removed

- 4- Remove the driver seat.
- 5- Lift up on the front of the seat to remove. Lift the seat up and out of the vehicle. Set it aside in a safe place. Do not place the seat next to sharp surfaces that could puncture the covering.



6- Remove the Front Brake System Cover

Use a flat screwdriver and pry the two clam shells apart. Getting the right half off is difficult. Rock the upper top side to the right and roll it down to remove. You will not reinstall this shell.



Figure 7: Brake System Clam shell housing



Figure 8: Brake System clam shell removed

Brake switch Installation:

- 1- Obtain the brake switch from the kit. It is the one with a simple right angle dual slotted bracket.
- 2- Locate the two holes in the bracket in front of the brake pedal linkage.
- 3- Mount the switch to the brake system bracket using the black #10 screws and nuts. Do not tighten.

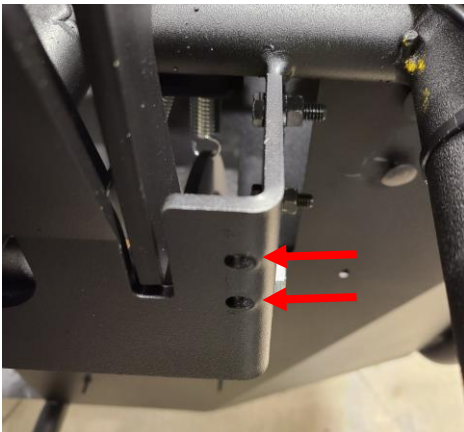


Figure 9: Brake Switch Mounting Location

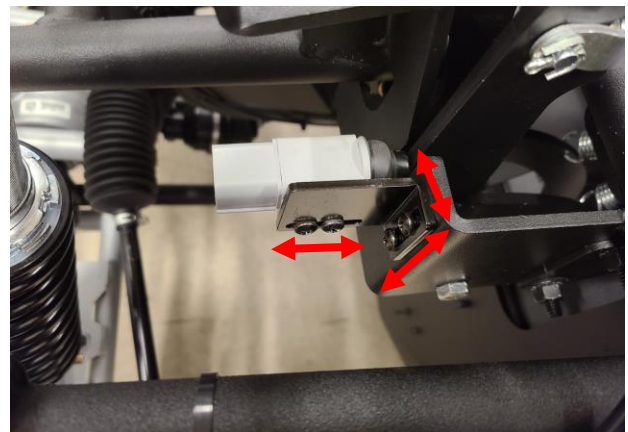


Figure 10: Brake Switch Mounted in position

- 4- Adjust the brake switch, side to side or up or down, such that it can travel between the openings in the brake system bracket. Tighten these two screws.
- 5- Adjust the brake switch forward or backward such that the switch is depressed (opened), when the brake switch is not depressed. Move the switch forward until you feel the click of the switch opening. Tighten these two screws.



Note: In this application, the switch is used as a **NORMALLY CLOSED** switch. Pushing the brake pedal allows the switch to close and power to be delivered to the tail lamps through this normally closed switch.

NOTE: The following two sections apply to both the polyvinyl bed and the steel bed for rear lighting and backup alarm installation. If you have a **FLIP SEAT** bed, skip to the section titled “**FLIP SEAT** Lighting and Alarm Installation”.

Tail Lamp Installation:

1. Locate the two tail light assemblies from the kit and the four 1.5 inch long carriage bolts and nuts.
2. Each lamp is attached to the tail light bracket with black #10 screws and nuts.
3. Tilt the bed up. Locate the two holes on each side of the back rail to mount the tail lights.
4. Mount a lamp assembly on each end of the rear rail. Use a half inch socket to tighten.



Figure 11: Location for Mounting Tail Lights



Figure 12: Tail Lights Mounted



Figure 13: Rear Tail Light View



FLIP SEAT Lighting and Alarm Installation

For vehicles equipped with a rear flip seat bed, the tail lamps are mounted on the rear Upper B pillar tube rails using a pair of P clamps found in KIT 19305. Attach each tail light as shown below to the vertical rail using two 2 inch P clamps and four black ¼" bolts provided in the 19305 kit.



Figure 14: Tail Lights Mounted on Upper Cab Rails for Flip Seat

Note: All electrical components are now mounted for this feature and next the wire harness must be installed.

Street Light Harness Installation for the Forward Portion:

- 1- Start the harness installation by laying the harness on the front cab tunnel with the green four pin connector and other associated connectors positioned forward toward the dash panel.
- 2- First, route the forward portion of the harness through the dash panel and up to the instrument panel harness.
- 3- Locate the green connector on the instrument panel harness and remove the black cap by depressing the release tab. **DO NOT PULL THE CAP OFF BY PULLING ON THE WIRES. USE ONE HAND ON EACH CONNECTOR HALF.**



Figure 15: Harness ready to install starting at cab tunnel

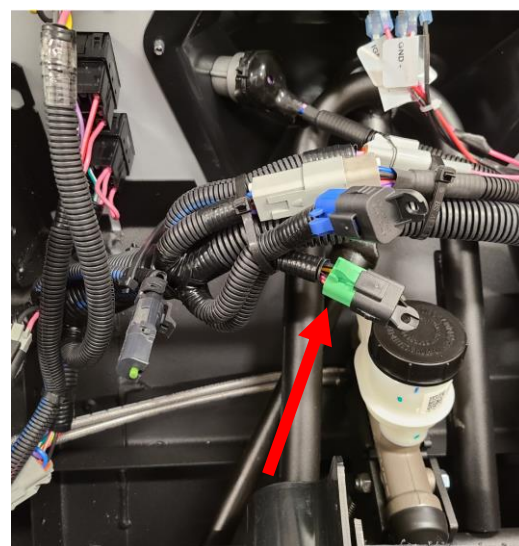


Figure 16: Locate Green Connector on Main IP Harness



- 4- Connect the green connector of the Brake Light harness to the green connector of the instrument panel harness.
- 5- Route the harness up and over the frame tube that arches over the steering shaft tubes. Loosely tie wrap.
- 6- Loosely tie wrap the harness to the frame tubes about every 12 inches.

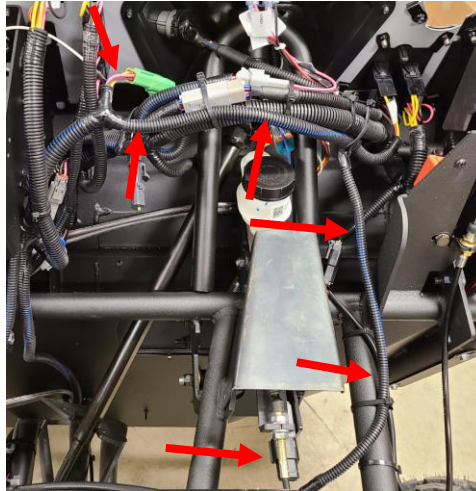


Figure 17: Harness Routed on Frame

- 7- Tie wrap the harness about every 12 inches to frame tubes. Tighten all tie wraps and cut off the extra tails with a wire cutter.

Brake and Tail Light Harness Installation for the Rearward Portion of the Vehicle:

The next section applies to vehicles with a polyethylene bed or a steel bed. If you have a FLIP SEAT bed, jump to the section labeled "FLIP SEAT REAR LIGHTING HARNESS INSTALLATION".

- 1- Route the rear portion of the harness out of the tunnel and follow the seat frame as shown below. Loosely tie wrap the harness to the frame tubes. Keep the harness routed low near the far left corner to keep it clear of the seat retention bracket hooks.
- 2- With a crew cab, route the two pin strobe light harness around the front seat frame with tie wraps. Route the tail light harness and connectors around the rear seat frame and tie wrap.

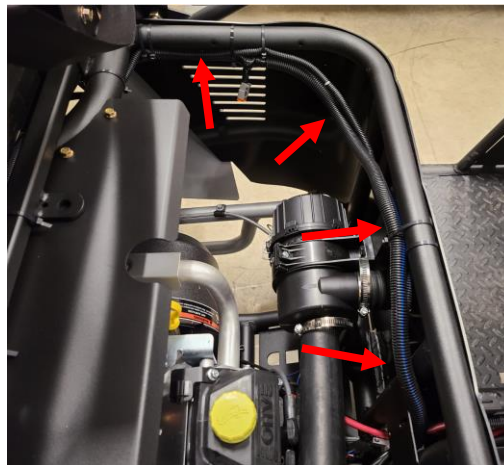


Figure 18: Path to Route the Brake Light Harness



- 3- Continue routing the tail light harness toward the rear of the vehicle.
- 4- Route under the seat frame and continue along the outer frame tube for the fender supports.
- 5- Tie wrap loosely about every 12 inches.

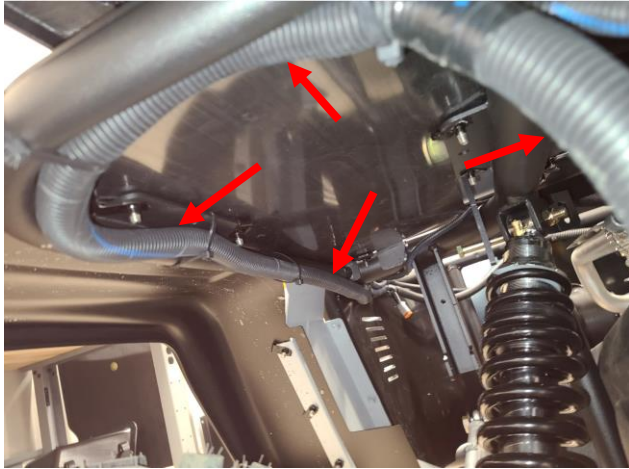


Figure 19: Tail Light Harness routed along outer frame



Figure 20: Harness Routed through the Pivot Point

- 6- Feed the harness past the bed pivot point and tie wrap again.
- 7- Route the shorter tail light connector to the driver side light. Install the connector on the lamp until it clicks.
- 8- Route the longer tail light connector to the passenger side light. Install the connector on the lamp until it clicks.
- 9- Locate the 1/4" holes in the bed frame for installing Christmas tree tie wraps which are provided on the harness.

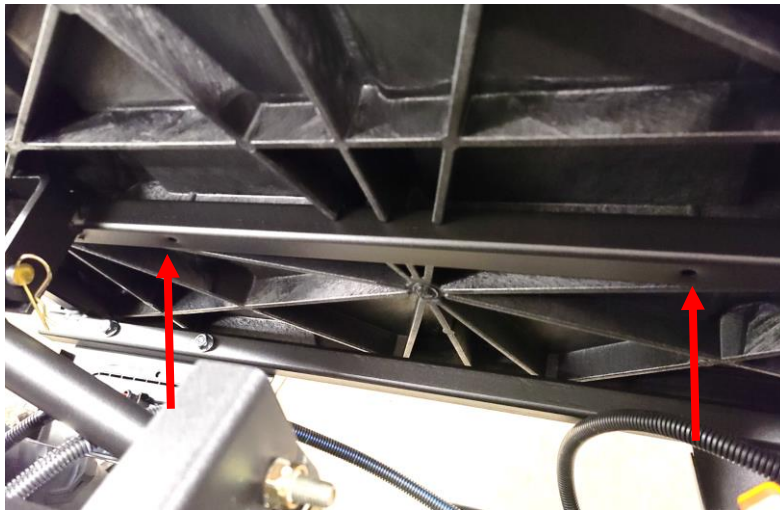


Figure 21: Sample Christmas tree Tie Wrap Hole Locations



Figure 22: Tail Light Harness Connection

- 10- Starting at each tail light, route and clip the harness to the frame with the Christmas tree tie wraps that are on the harness using the holes in the frame.
- 11- Back up and continue clipping the harness to the frame until you get back to the pivot point.



- 12- The polyethylene bed is smaller than the steel bed so there will be some extra harness length with the poly bed. Use your best judgement to hank up and tie wrap the extra length. Be sure to leave enough length to prevent stress on the harness when the bed is tilted.



Figure 23: Tail Light Wiring Routing and Clipping on a Poly Bed

Brake and Tail Light Harness Installation for the Crew Cab

- 1- The Street harness on the crew cab is installed in exactly the same manner as the above listed standard cab procedure, except that the rearward portion of the harness is routed to the rear seat before it is attached to the fender frame and dump bed.
- 2- The strobe light two pin gray connector is routed and clipped to the front seat frame.
- 3- The crew cab kit is a different part number with a longer harness but same components.

FLIP SEAT REAR LIGHTING HARNESS INSTALLATION

- 1- Remove the driver side screw that holds the back plastic seat surround cover in place. Pull the end of the cover back and away from its position.
- 2- Cut off a one inch square piece from the upper right corner of the surround as shown below if it is not already removed.



Figure 24: One inch square section of the surround cut out
19151 Installation Guide, Brake & Tail Light Package



- 3- Route the rear portion of the harness along the side seat frame and under the rail at the back. Take it up the front of the driver side B pillar on the outside of the seat frame. Route the harness end behind the seat at the upper seat back tube.



Figure 25: Routed Along Side Rail



Figure 26: Route under the Side Tube



Figure 27: Route up the B Pillar

- 4- Route the harness under the upper seat back rail.

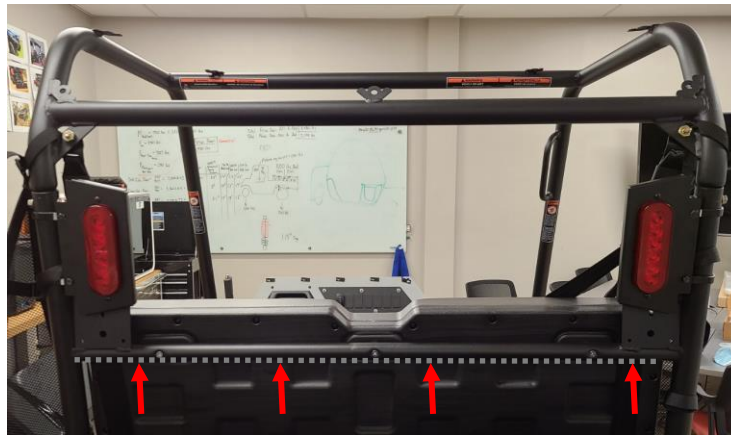


Figure 28: Harness Routed behind upper seat back rail

- 5- Route each tail light harness up to the tail light and plug in the harness until it clicks.
6- Tie wrap each harness about every 12 inches.



Figure 29: Route each tail light harness up to each tail light

Testing Brake and Tail Light Feature:

- 1- The Tail lights only work with the ignition key ON and the Brake Lights work with the key ON or OFF. Turn the key to the ON position. Do not start the vehicle.
- 2- Turn on the headlight switch. Verify that both rear tail lights illuminate.
- 3- Depress the Brake pedal. Verify that the rear brake lights illuminate. Adjust brake switch if necessary for proper operation.

Reassembly:

- 1- Reinstall the seat.
- 2- Reinstall the tunnel cover(s).
- 3- Reinstall the black instrument panel cover.
- 4- Do not re-install the black plastic clam shell cover.
- 5- Reinstall the hood. Be sure to reconnect the front turn signals if equipped.
- 6- Reinstall the windshield if equipped.