



19051- Kit, Pre-2021 Snow Plow 50 inch

19050 - Kit, Pre-2021 Snow Plow 60 inch

19098 – Pre-2021 Snow Plow Installation Guide

SPECIAL REQUIREMENTS: Kits are compatible with Pre-2021 American Landmaster Vehicles

TOOLS REQUIRED		ESTIMATED INSTALL TIME	RECOMMENDED SKILL LEVEL
1/2" Wrench	Drill	2 Hours	Intermediate
1/2" Socket & Ratchet	5/32 (0.281) Drill Bit		
Utility Knife	1/8" Allen Wrench		
General Purpose Pliers			

Before you begin, check the contents of the kit against the parts list below. Immediately contact American Landmaster with any questions or discrepancies. American Landmaster cannot assume responsibility for any damage or injury resulting from incorrect installation of parts. American Landmaster suggests that accessory kits be installed by an authorized American Landmaster dealer or service center.

!! WARNING !!

Serious Injury or death could occur!

- Use proper personal protective equipment during installation of this kit. Use safety glasses.

PARTS LIST FOR AMERICAN LANDMASTER ACCESSORY KIT

(1)	50 or 60 inch Snow Plow	(1)	Snow Plow Up / Down Switch	(1)	Snow Plow Left /Right Switch
(1)	Adapter Snow Plow Harness	(1)	Main Snow Plow Harness	(8)	Tie wraps
(1)	Clevis Pin	(1)	Retainer Hair Pin	(2)	#10 Screws (2) #10 Nuts
(2)	Two Pin Connector Caps	(2)	Cap Mounting Plates		



Fig 1 – Kit contents – Pre-2021 Snow Plow Kit



ASSEMBLY INSTRUCTIONS:

Preliminary Dis-assembly instructions:

- 1- Remove the hood. If the vehicle has a windshield, remove it first. To remove the hood, remove the bolt on the left and the right side near the end of the hood and two screws from the front of the hood. If the vehicle has turn signals, disconnect the amber lights by pulling apart the spade terminals. Lift the hood off and set aside. Set the hood aside where it will not be damaged.



Figure 2: Remove Two Fender Bolts



Figure 3: Remove Two Hood Fasteners

2. Front Receiver Hitch

The vehicle must have a front receiver hitch in order to attach the snow plow. If your vehicle does not have a front hitch, please purchase one of the following kits and install. Follow instructions in the kit to ensure proper and safe operation of the snow plow.

- 2 Wheel Drive: Please order 2-40723 for two wheel drive vehicles.
- 4 Wheel Drive: Please order 16648 for four wheel drive vehicles

3. Remove the tunnel cover. Remove 14 bolts from the cover. Remove the driver seat lower cushion and under storage tray.



Figure 4: Tunnel Cover Installed



Figure 5: Tunnel Cover Removed

Switch Installation:

- 1- Mount the switches on the far left switch panel if there is room available. If there is no room due to existing optional switch content, you may want to locate the switches in the flat section of the central instrument panel



Figure 6: Upper Dash Panel Mounting Location



Figure 7: Side Panel Mounting Location

- 2- Use the paper template, cut it to size and tape it to the panel that will house the switches. Cut a test hole in a piece of similar material to get familiar with cutting these holes accurately.

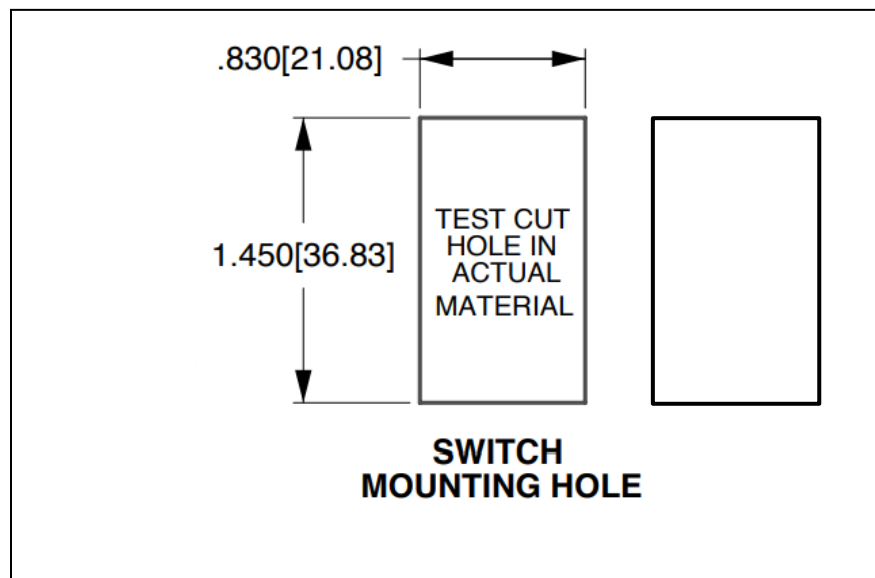


Figure 8: Switch Hole Template

- 3- Use a 5/32 inch drill bit and drill holes in the four corners of each switch location.
- 4- Use a carpet knife or other cutting tool to cut out the plastic for the switch hole. Cut on the small side since cutting the hole too large will not allow the switch to be properly retained to the panel. Trim as needed. Use a new blade for easier cutting.
- 5- Install each switch in the holes that have been cut. Switches should snap in with a tight fit.

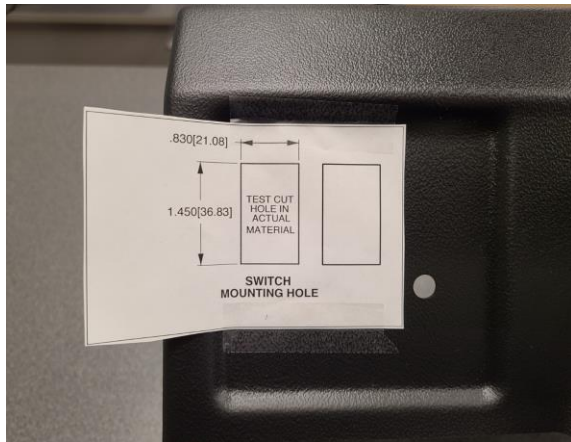


Figure 9: Cutting Switch Holes with the Template



Figure 10: Switches installed in the Panel

Snow Plow and Main Harness Installation:

- 1- Attach the snow plow to the front receiver hitch of the vehicle.



Figure 11: Snow Plow Mounted in Front Hitch



Figure 12: Clevis Pins and Hair Pin Retainer

- 2- Insert the clevis pin to captivate the plow into the receiver hitch. Insert the hair pin retainer in the clevis pin to lock it in.



Figure 13: Clevis Pins and Hair Pin Retainer



- 1- Lay in the main snow plow harness on the front driver side frame.

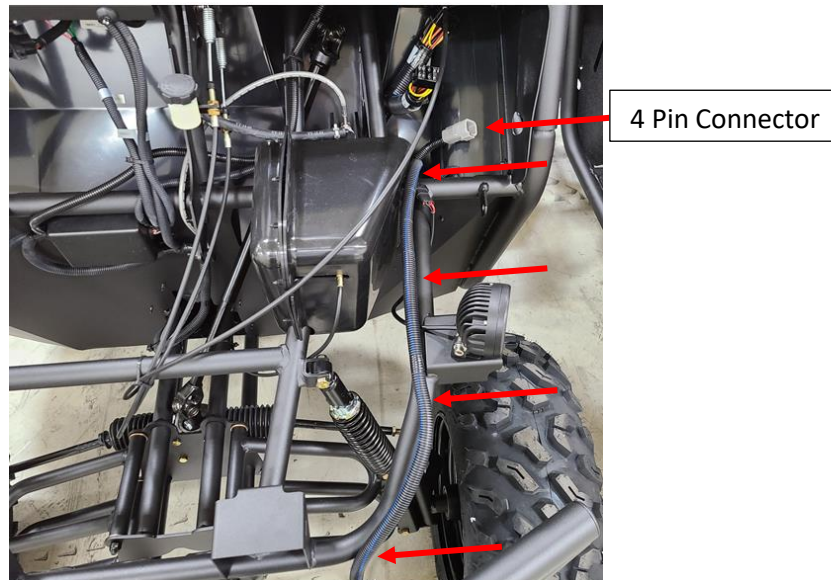


Figure 14: Snow Plow Harness Laid on the Frame

- 2- Orient the harness such that the gray four pin connector ends immediately behind the driver side of the instrument panel.
- 3- Place the black switch connectors near where the rocker switches are mounted on the instrument panel.
- 4- Connect each switch to the respective harness connector. Note the plow labels on the harness near the switch connectors.
- 5- Be sure to install the switch in the correct orientation. Line up the hook on the switch with the latch on the harness connector. Place one hand on the front of the switch while installing the harness connector on the rear. A rocking motion will make installing the harness connector easier. It is nearly a blind mate so be careful that the connector is lined up with the switch and do not bend the switch pins. Do not force the connection. Push the harness connector onto the switch until the two meet with no gap between them.

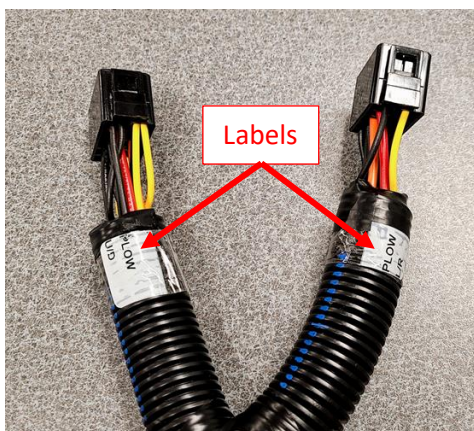


Figure 15: Switch Connector labels

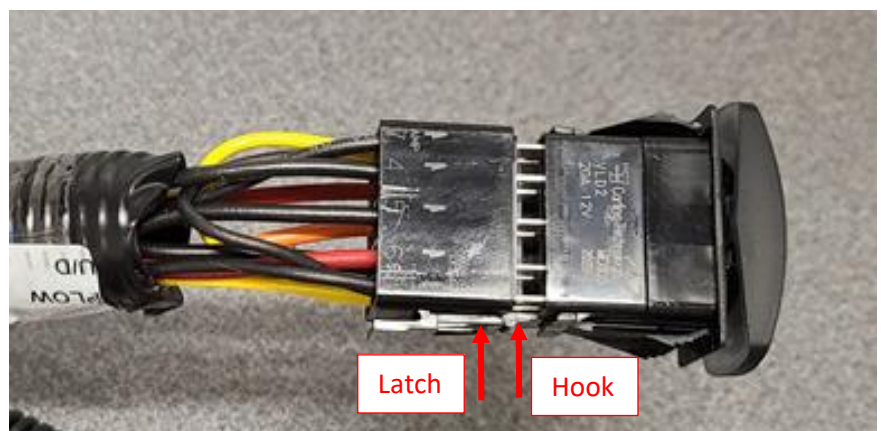


Figure 16: Ensuring Switch Orientation with the Harness Connector

- 6- On the other end of the harness, connect the gray and black 2 way connectors to the respective gray and black connectors of the snow plow motors. Match the color codes for each connector pair.



- 7- Once all connections are made, tie wrap the main harness to the frame about every 12 inches from end to end. Be sure to tie wrap up the harness near the snow plow motors to prevent damage while moving snow.



Figure 17: Upper Gray Motor Connector Mated



Figure 18: Lower Black Motor Connector Mated

Storage Cap Installation:

A method to store and seal the plow motor connectors is provided when the plow is removed for summer operation. It is important to stow the harness and connectors to prevent damage and corrosion. On the end of the gray and black two way connectors are connector caps. There are two versions that may be present on your harness. The first step is to drill two 1/8" holes in the side of the bumper plate as show below. Exact location is not important. Drill two holes that will accommodate the #10 screws found in the kit. The higher, the better to get the connectors farther away from the ground.



Figure 19: Mounting Storage Cap Plates



Figure 20: Caps Installed on Plates



Figure 21: Harnesses Stowed in Caps

Early versions have two connector caps with a separate retention plate for each cap in the kit. Insert the #10 screws through the plates and the holes in the bumper that were drilled and tighten with the nuts provided. The plate should be oriented with the screw



hole at the bottom. The plate should be mounted with the beveled edge facing outward. Slide the cap back on the plate until it latches. The screw head will be covered by the cap if properly installed. The second version is a single piece cap with a mounting hole. Merely attach a screw through the mounting hole to the bumper and tighten it down. In both cases make sure the cap opening are pointing straight down. Tie wrap up the extra length of harness for safety. When ready to reuse the harness with the plow, depress and hold the connector tab and pull the connector out of the cap and attach to the plow. **DO NOT PULL ON THE WIRES WHEN DISCONNECTING THE HARNESS CONNECTOR FROM THE CAP.**

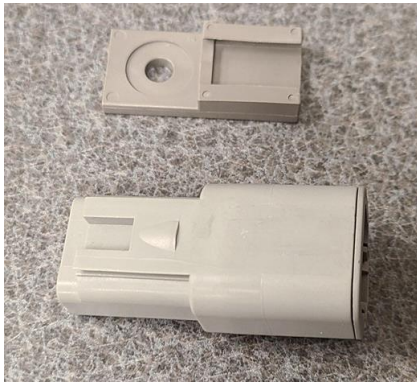


Figure 22: Separate Mounting Plate with Sealing Cap

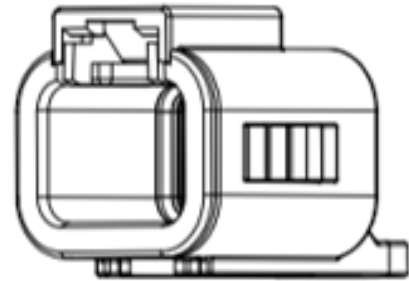


Figure 23: Single Piece Sealing Cap

Adapter Harness Installation:

- 1- Lay in the adapter harness on the back side of the instrument panel.
- 2- Plug the 4 way gray connector of the adapter harness into the 4 way connector of the snow plow harness.

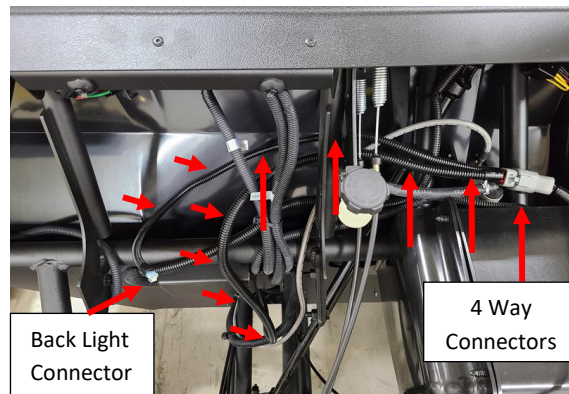


Figure 24: Laying the Adapter Harness across the Instrument Panel

- 3- Route the single yellow wire with a piggy back terminal to the existing head light switch in the central instrument panel. Route the harness behind the instrument panel brackets. Stay clear of the steering column shaft.
- 4- Remove the headlight switch wire that is brown/white and plug it into the piggy back spade terminal of the adapter harness. Remove the head light wire from the back of the switch using a pliers. **DO NOT REMOVE THE TERMINAL BY PULLING ON THE WIRE SEPARATELY.**
- 5- Install the piggy back terminal back onto the open head light switch terminal. Orient terminal so that it does not interfere with the other head light switch wire.



- 6- Route the other end of the harness with the in line fuse down the cab tunnel and over to the 12 volt battery. Be sure to route the harness away from the park brake mechanism.
- 7- Attach the in-line fuse wire the positive side of the battery terminal using the ½ inch wrenches.
- 8- Attach the black wire to the negative side of the battery terminal using the ½ inch wrenches.
- 9- There may be many cables on the battery terminals. Make sure that you reconnect all loose cables as required.
- 10- Tie Wrap the cable to the other cables in the bundle.

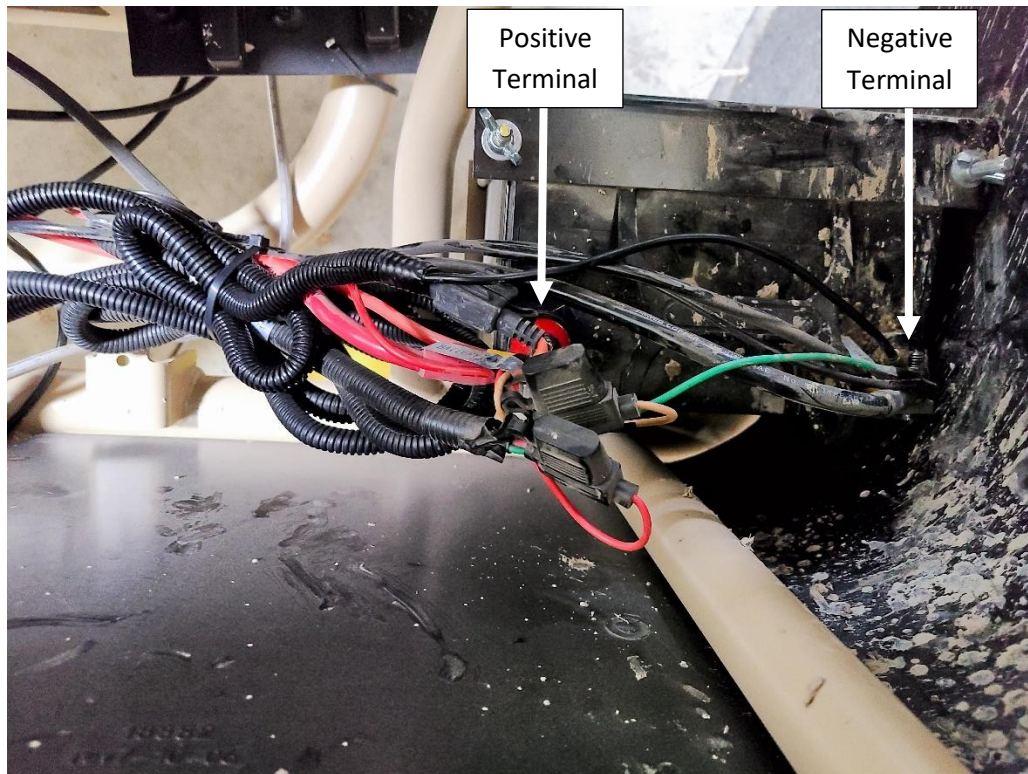


Figure 25: Battery will all cables re-connected

Testing the Snow Plow

- 1- Turn ON the ignition key to test the switch backlight. The snow plow feature itself is battery operated.
- 2- With the ignition key ON, turn on the headlights. Verify that the two new snow plow switch back lights illuminate.
- 3- Press the snow plow UP switch, the snow plow should raise while the switch is depressed.
- 4- Press the snow plow DOWN switch, the snow plow should lower while the switch is depressed.
- 5- Press the snow plow RIGHT switch, the snow plow should move to the right while the switch is depressed.
- 6- Press the snow plow LEFT switch, the snow plow should move to the left while the switch is depressed.

If any plow function does not work, ensure that the switch connectors and the plow connectors are fully seated.

Re-assembly:

- 1- Reinstall the seat and under seat storage tray.
- 2- Reinstall the cab tunnel cover.
- 3- Reinstall the hood. Be sure to hook up the front turn signal lamps if equipped.
- 4- Reinstall the windshield, if equipped.