

7151 150cc FUN KART ASSEMBLY INSTRUCTIONS

Congratulations on the purchase of your 7151 fun kart! These instructions will guide you through the assembly process. Carefully read these instructions and familiarize yourself with the tools and fasteners required before starting the assembly of your fun kart.

Fasteners required for assembly

Please refer to the last page of instructions for a hardware list. Ensure that you have all hardware before starting the assembly of your fun kart.

Tools required for assembly

Please gather the required tools and familiarize yourself with them before starting the assembly of your fun kart. The tools will be mentioned in italic text for easy recognition.

Hammer	Box Cutters	10mm Socket
Safety Glasses	Socket Wrench	13mm Wrench
12mm Wrench	14mm Wrench	
8mm Socket	Pry Bar	

WARNING

Wear proper eye protection during the uncrating and assembly process to avoid potential eye injuries.

WARNING

RISK OF SERIOUS INJURY OR DEATH
The Brush Bars and the Seat and Shoulder Belt are critical parts of the Operator / Passenger safety system on this kart. Do not attempt to operate the kart until all components have been properly installed.

1 Uncrating the fun kart

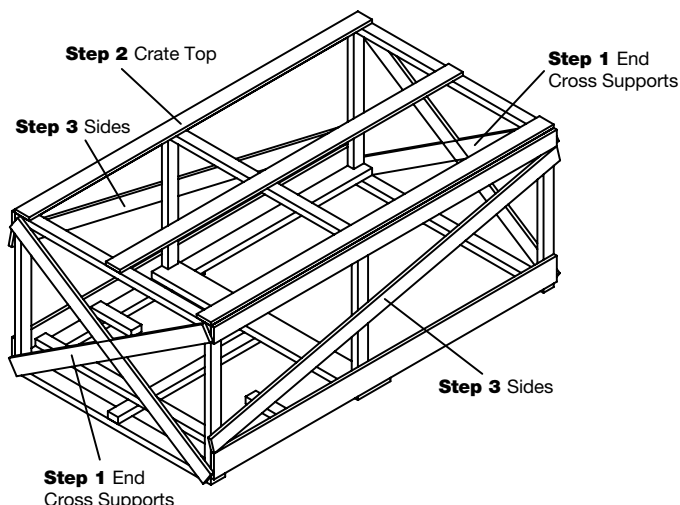
- Wear your **Safety Glasses** to prevent eye injury.
- Using the **Hammer** and **Pry Bar**, remove cross supports at each end of the crate and discard.
- Carefully pry and remove crate top and discard.

2 Remove crate sides and discard

- Using **Box Cutters**, cut and remove the hold down ties.
- Remove the kart from the crate base and discard base.

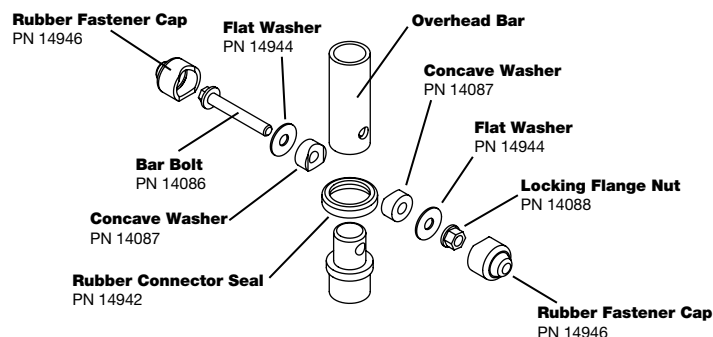
3 Unpacking the components

- Unpack all of the loose components from the unit and set aside.
- Remove protective plastic from each component and discard.



4 Rubber Connector Seals

- Locate the (6) Rubber Connector Seals (PN 14942).
- Slip the connector seal on the ends of each overhead bar where it will connect to the main frame. Seals should be cupped in the downward direction. Once the bar is installed, slide the seal down over the connection joint.
- Rubber Fastener Caps will be installed on all overhead bar bolts once all bars are installed and bolts tightened.

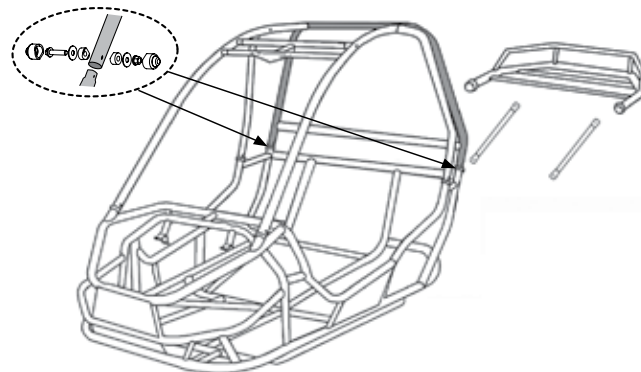


5 Rear C-Pillar Installation

- Locate the C-Pillar assembly and fasteners: (1) 15004-48, (2) 14086, (4) 14944, (4) 14087 and (2) 14088.
- Set the C-Pillar assembly (shaded) in place and install the fasteners with a **12mm Wrench** and **10mm Socket Wrench**.

DO NOT tighten any fasteners at this time.

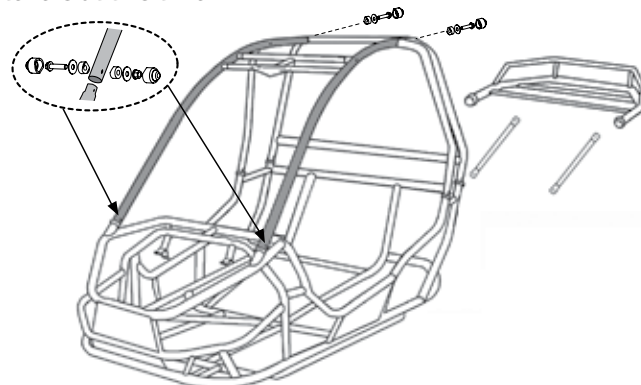
Note: The seat belt shoulder mounts are pre-assembled to the C-Pillar.



6 Overhead Front Bar Installation

- Locate the A-Pillars, fasteners, and the plastic end caps: (2) 15001, (4) 14086, (6) 14944, (6) 14087, (2) 14088 and (2) 14083.
- Slip the bar end caps over the ends of the A-Pillars that attach to the C-Pillar. Set the A-Pillars (shaded) in place and install the fasteners with a **12mm Wrench** and **10mm Socket Wrench**.

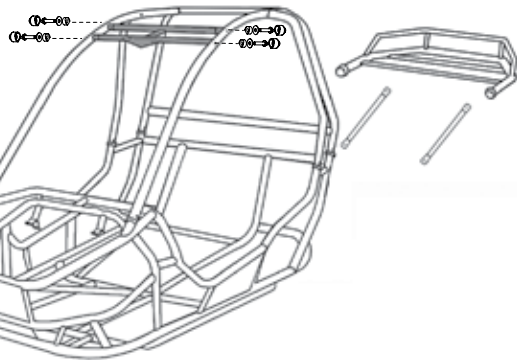
DO NOT tighten any fasteners at this time.



7 Overhead Cross Bar Installation

- Locate the cross bar, fasteners, and plastic end caps: (1) 14081, (2) 14696, (2) 14944, (2) 14087, and (4) 14084.
- Slip the bar end caps over both ends of the cross bar (shaded) Set the cross bar in place and install the fasteners with **10mm Socket Wrench**.

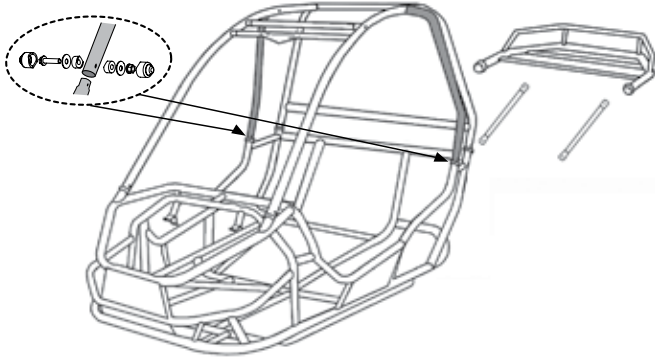
DO NOT tighten any fasteners at this time.



8 B-Pillar Installation

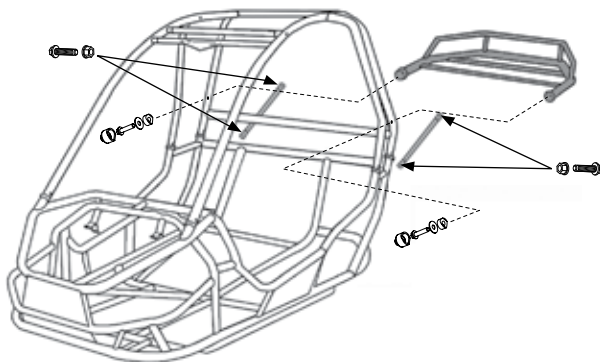
- Locate the B-Pillars, fasteners, and the plastic end caps: (1) 15002, (1) 15005, (2) 14086, (2) 14696, (6) 14944, (6) 14087, (2) 14088 and (2) 14083.
- Slip the bar end caps over the ends of the B-Pillars that attach to the A-Pillar. Set the B-Pillars (shaded) in place and install the fasteners with a **12mm Wrench** and **10mm Socket Wrench**. The 55mm long fastener is used at the connection to the main frame and the 50mm long fastener is used at the connection to the A-Pillar.

DO NOT tighten any fasteners at this time.



9 Cargo Rack Installation

- Locate the spoiler, fasteners, and plastic end caps: (2) 15007, (1) 15548, (2) 14944, (2) 14087, and (2) 14083.
- Slip the bar end caps over both ends of the rack (shaded) and set the spoiler in place against the C-Pillar and install the fasteners with **10mm Socket Wrench**.
- Install the rack supports using (4) 14239 and (4) 14088 nuts.



10 Tighten Fasteners

- Use a **12mm Wrench** and **10mm Socket Wrench** to tighten all the fasteners, starting with step 5.
- Install Rubber Fastener Caps on all tightened overhead bar bolts: (20) 15113

11 Safety Flag Installation

- The flag fasteners have been pre-installed onto the right rear corner of the spoiler.
- Simply loosen the plastic nut from the top side of the rack and slip the flag into place.
- Finger-tighten the plastic nut to retain the flag.

12 Fuel Line Connection

- Locate the fuel hose coming from the carburetor. (It can be identified by the flexible protective steel wire coiled around it.)
- Locate the fuel line that originates from the valve mounted to the bottom of the fuel tank. The line will have a clear or white in-line fuel filter installed at its free end.
- Connect the fuel line from the carburetor to the fuel filter.
- Ensure that the hoses are fully seated with the clamps installed to prevent leaks.

13 Final Preparation

- Seat belts should be checked to ensure that they are not twisted or binding. As well, the forked seat belt retainer clips need to be removed and discarded. (Ref fastener illustration on page 2)
- Fill the fuel tank with clean, fresh, mid-grade (89-93 Octane) gasoline per the supplied Owners Guide / Parts Manual.
- Check the engine oil level and tire pressure per the supplied Owners Guide / Parts Manual.

Required Hardware

Part #	Description	Quantity
14942	SEAL, BAR CONNECTION - 1.25"	6
14086	BOLT, M8 X 1.25 X 55 (Flange Head)	16
14944	WASHER, BAR CONNECTION M8 X 24 X 1.25	22
14087	WASHER, CONCAVE CLAMP	22
14088	NUT, M8 X 1.25 LOCKING (Flange Head)	10
14083	ENDCAP, BAR - 1.25" BLACK PLASTIC	6
14946	COVER, BOLT CAP	22
14239	BOLT, M8 x 1.25 x 20 (Flange Head)	4
14084	ENDCAP, BAR 1.00 BLACK PLASTIC	4

INITIAL STARTUP INSTRUCTIONS

Battery Connection

NOTE: Ensure that the connections are correct. Reversing the wires to the battery terminals may cause the inline fuse to blow.

- This unit has been supplied with a pre-charged battery. While every effort has been made to ensure that the battery will maintain its charge, it may require additional charging by the retailer or consumer. Additionally, the leads have been disconnected to preserve its charge. Prior to starting, the leads must be connected to the (+) and (-) terminals of the battery.
- Using a Phillips Screwdriver, connect the RED wire to the (+) battery terminal as indicated on the battery casing.
- Using a Phillips Screwdriver, connect the GREEN wire to the (-) battery terminal as indicated on the battery casing.

Initial (First Time) Startup

NOTE: The key switch and fuel valve should always be turned to the "OFF" position when the vehicle is not in use.

- Turn the manual fuel valve to the "ON" position.
- Ensure that both engine stop switches are in the "RUN" position.
- Set the parking brake per the Owner's Manual.
- Fasten seatbelt.
- Ensure that the vehicle is shifted into the NEUTRAL gear.
- Pump the throttle pedal several times to ensure that the pedal operates and returns smoothly.
- Pull the choke lever all the way out (fully "ON").
- With one foot on the brake pedal, start the engine by turning the ignition key: holding for no longer than 5 second intervals.
- Once the engine starts, let the key return to the "RUN" position.
- Push the choke in slowly. If the engine runs rough, pull the choke out slightly and then continue to push it in after the engine can accept small applications of the gas pedal. Continue until the choke is pushed all the way in (fully "OFF"). This may require a period of several seconds to several minutes, depending on the air temperature.
- DO NOT drive the unit until the Owner's Manual has been fully read and understood.