



5210 208cc FUN KART ASSEMBLY INSTRUCTIONS

Congratulations on the purchase of your 5210 fun kart! These instructions will guide you through the assembly process. Carefully read these instructions and familiarize yourself with the tools and fasteners required before starting the assembly of your fun kart.

Fasteners required for assembly

Please refer to the last page of instructions for a hardware list. Ensure that you have all hardware before starting the assembly of your fun kart.

Tools required for assembly

Please gather the required tools and familiarize yourself with them before starting the assembly of your fun kart. The tools will be mentioned in italic text for easy recognition.

Hammer	Box Cutters	10mm Socket
Safety Glasses	Socket Wrench	13mm Wrench
12mm Wrench	14mm Wrench	
8mm Socket	Pry Bar	

WARNING

Wear proper eye protection during the uncrating and assembly process to avoid potential eye injuries.

WARNING

RISK OF SERIOUS INJURY OR DEATH
The Brush Bars and the Seat and Shoulder Belt are critical parts of the Operator / Passenger safety system on this kart. Do not attempt to operate the kart until all components have been properly installed.

1 Uncrating the fun kart

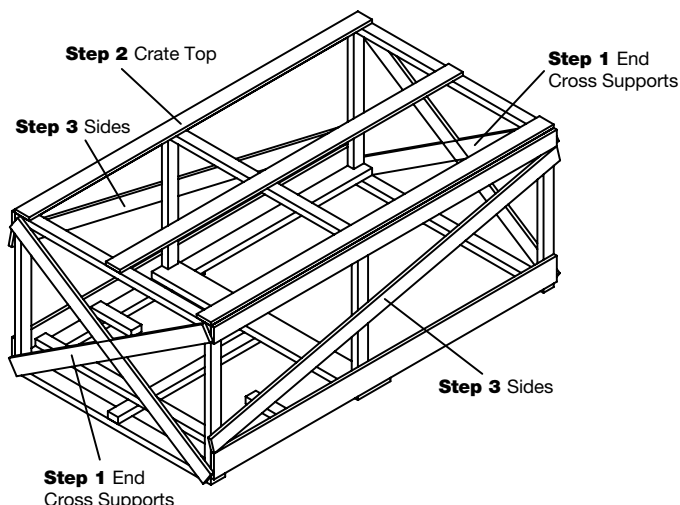
- Wear your **Safety Glasses** to prevent eye injury.
- Using the **Hammer** and **Pry Bar**, remove cross supports at each end of the crate and discard.
- Carefully pry and remove crate top and discard.

2 Remove crate sides and discard

- Using **Box Cutters**, cut and remove the hold down ties.
- Remove the kart from the crate base and discard base.

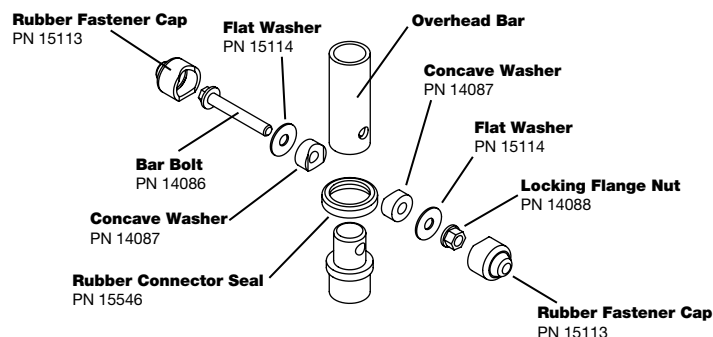
3 Unpacking the components

- Unpack all of the loose components from the unit and set aside.
- Remove protective plastic from each component and discard.



4 Rubber Connector Seals

- Locate the (6) Rubber Connector Seals (PN 15546).
- Slip the connector seal on the ends of each overhead bar where it will connect to the main frame. Seals should be cupped in the downward direction. Once the bar is installed, slide the seal down over the connection joint.
- Rubber Fastener Caps will be installed on all overhead bar bolts once all bars are installed and bolts tightened.

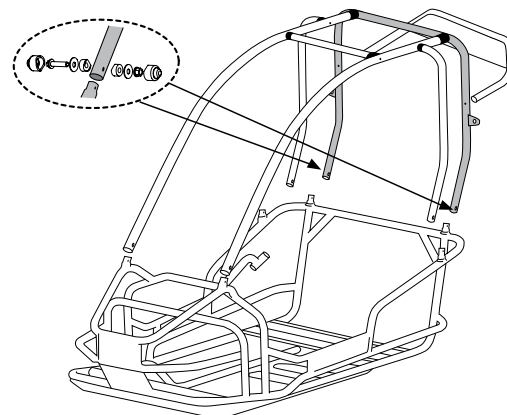


5 Rear C-Pillar Installation

- Locate the C-Pillar assembly and fasteners: (1) 15470, (2) 14086, (4) 15114, (4) 14087 and (2) 14088.
- Set the C-Pillar assembly (shaded) in place and install the fasteners with a **12mm Wrench** and **10mm Socket Wrench**.

DO NOT tighten any fasteners at this time.

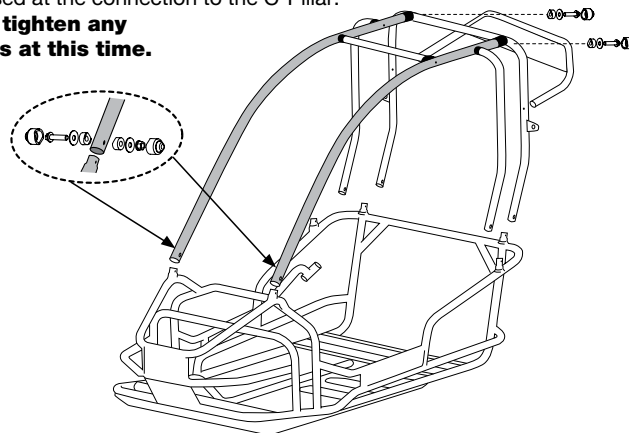
Note: The seat belt shoulder mounts are pre-assembled to the C-Pillar.



6 Overhead Front Bar Installation

- Locate the A-Pillars, fasteners, and the plastic end caps: (2) 15474, (2) 14086, (2) 14696, (6) 15114, (6) 14087, (2) 14088 and (2) 15475.
- Slip the bar end caps over the ends of the A-Pillars that attach to the C-Pillar. Set the A-Pillars (shaded) in place and install the fasteners with a **12mm Wrench** and **10mm Socket Wrench**. The 55mm long fastener is used at the connection to the main frame and the 50mm long fastener is used at the connection to the C-Pillar.

DO NOT tighten any fasteners at this time.

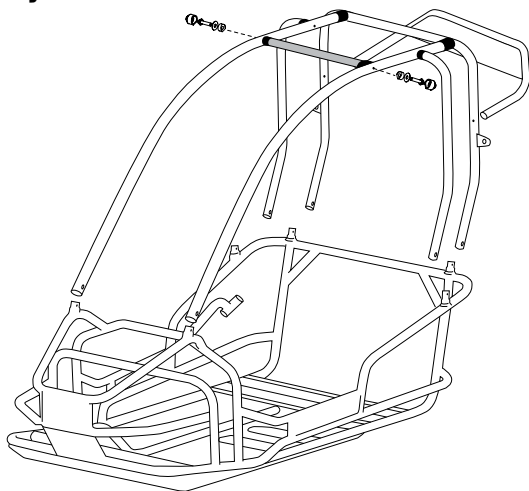


5210 208cc FUN KART ASSEMBLY INSTRUCTIONS

7 Overhead Cross Bar Installation

- Locate the cross bar, fasteners, and plastic end caps: (1) 15471, (2) 14696, (2) 15114, (2) 14087, and (2) 15475.
- Slip the bar end caps over both ends of the cross bar (shaded) Set the cross bar in place and install the fasteners with **10mm Socket Wrench**.

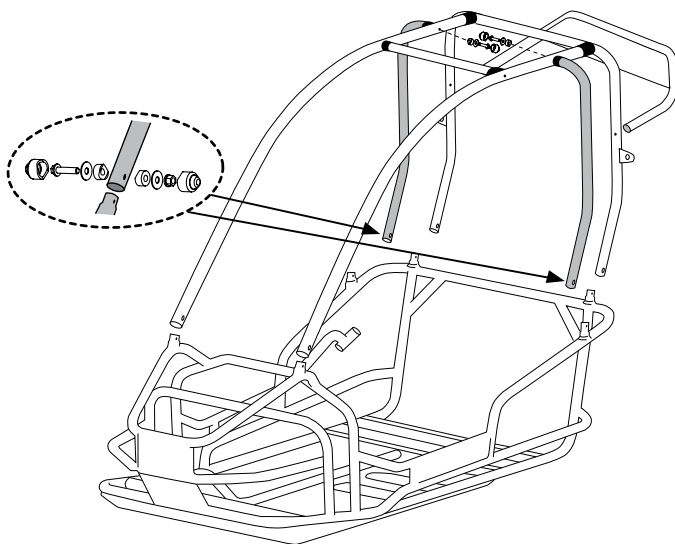
DO NOT tighten any fasteners at this time.



8 B-Pillar Installation

- Locate the B-Pillars, fasteners, and the plastic end caps: (1) 15472, (1) 15473, (2) 14086, (2) 14696, (6) 15114, (6) 14087, (2) 14088 and (2) 15475.
- Slip the bar end caps over the ends of the B-Pillars that attach to the A-Pillar. Set the B-Pillars (shaded) in place and install the fasteners with a **12mm Wrench** and **10mm Socket Wrench**. The 55mm long fastener is used at the connection to the main frame and the 50mm long fastener is used at the connection to the A-Pillar.

DO NOT tighten any fasteners at this time.

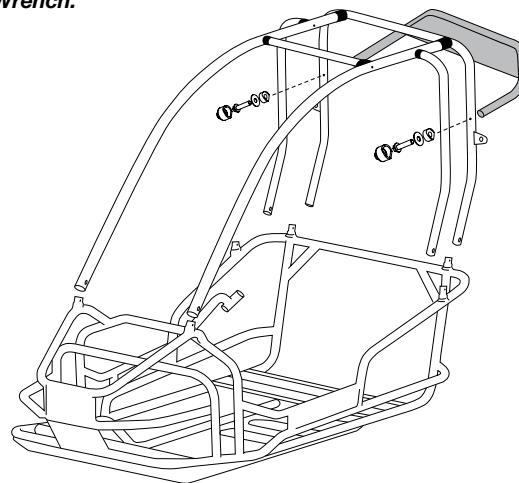


Required Hardware

Part #	Description	Quantity
15546	SEAL, BAR CONNECTION - 1.125"	6
14086	BOLT, M8 X 1.25 X 55 (Flange Head)	6
15114	WASHER, BAR CONNECTION M8 X 24 X 1.25	20
14087	WASHER, CONCAVE CLAMP	20
14088	NUT, M8 X 1.25 LOCKING (Flange Head)	6
14696	BOLT, M8 X 1.25 X 50 (Flange Head)	8
15475	ENDCAP, BAR - 1.125" BLACK PLASTIC	8
14426	BOLT, M6 X 1.00 X 14 (Flange Head)	3
14631	COVER, STEERING WHEEL	1
15113	COVER, BOLT CAP	20

9 Spoiler Installation

- Locate the spoiler, fasteners, and plastic end caps: (1) 15479, (2) 14696, (2) 15114, (2) 14087, and (2) 15475.
- Slip the bar end caps over both ends of the spoiler (shaded) and set the spoiler in place against the C-Pillar and install the fasteners with **10mm Socket Wrench**.



10 Tighten Fasteners

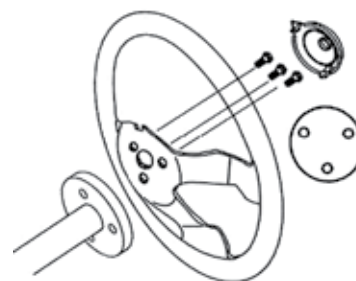
- Use a **12mm Wrench** and **10mm Socket Wrench** to tighten all the fasteners, starting with step 5.
- Install Rubber Fastener Caps on all tightened overhead bar bolts: (20) 15113

11 Safety Flag Installation

- The flag fasteners have been pre-installed onto the right rear corner of the spoiler.
- Simply loosen the plastic nut from the top side of the rack and slip the flag into place.
- Finger-tighten the plastic nut to retain the flag.

12 Steering Wheel Installation

- Locate the steering wheel and fasteners: (3) 14426.
- The steering wheel has three mounting holes on it. With the front wheels aligned in the straight position, orient the steering wheel with one hole at the 6:00 position, and the other holes at 10:00 & 2:00 positions.
- Using an **8mm Socket Wrench**, install the bolts and tighten to secure the steering wheel
- Align the steering wheel cover and snap into place. (1) 14631.



Orientation of wheel holes

13 Final Preparation

- Fill the fuel tank with clean, fresh mid-grade gasoline.
- Check the engine oil level per the supplied Owner/Operator manual.
- Refer to the supplied Owner/Operator manual prior to operating your new Fun Kart.