

Kit PN CA00005-R – Brake and Throttle Pedal for Gas Models

Kit PN CA00006-R – Brake Pedal for EV Models

CP00065 Installation Guide, Pedal Assembly

SPECIAL REQUIREMENTS: This Guide covers Standard Cab and Crew Cab

TOOLS REQUIRED		ESTIMATED INSTALL TIME	RECOMMENDED SKILL LEVEL
Flashlight	1/8" Allen Wrench	1 Hours	Intermediate
9/16" Wrench	3/8" Socket		
4 mm Allen Wrench	9/16" Socket		
Needle Nose Pliers	Impact Driver		
	10 mm Socket		

Before you begin, check the contents of the kit against the parts list below. Immediately contact American Landmaster with any questions or discrepancies. American Landmaster cannot assume responsibility for any damage or injury resulting from incorrect installation of parts. American Landmaster suggests that accessory kits be installed by an authorized American Landmaster dealer or service center.

!! WARNING !!

Serious Injury or death could occur!

- Use proper personal protective equipment during installation of this kit. Use safety glasses.

PARTS LIST FOR AMERICAN LANDMASTER ACCESSORY KIT

CA00005-R:

- | | |
|----------------------------------------------|--------------------------|
| (1) WDMT, Brake Pedal | (1) WDMT, Throttle Lever |
| (4) Bushing, Oil Impregnated-Bronze 0.636 in | (2) Spring, Latch Lever |

CA00006-R:

- | | |
|-------------------------|----------------------------------------------|
| (1) WDMT, Brake Pedal | (2) Bushing, Oil Impregnated-Bronze 0.636 in |
| (1) Spring, Latch Lever | |

Dis-Assembly Instructions (EV only):

- 1- Turn the key switch OFF, and place the Forward/Reverse handle in NEUTRAL. Remove the key, and chock the rear wheels.
- 2- Remove the hood. Remove three screws from each front fender and two screws from the front hood using the 4 mm Allen wrench. Lift the hood off and set aside. Set the hood aside where it will not be damaged. See Figure 1 and Figure 2.



Figure 1: Removing Three Fender Fasteners



Figure 2: Removing Two Hood Fasteners

- 3- Remove the upper and lower pedal guard bracket. Remove 2 bolts from the upper bracket and 3 bolts from the lower bracket using a 10 mm socket. See Figure 3.

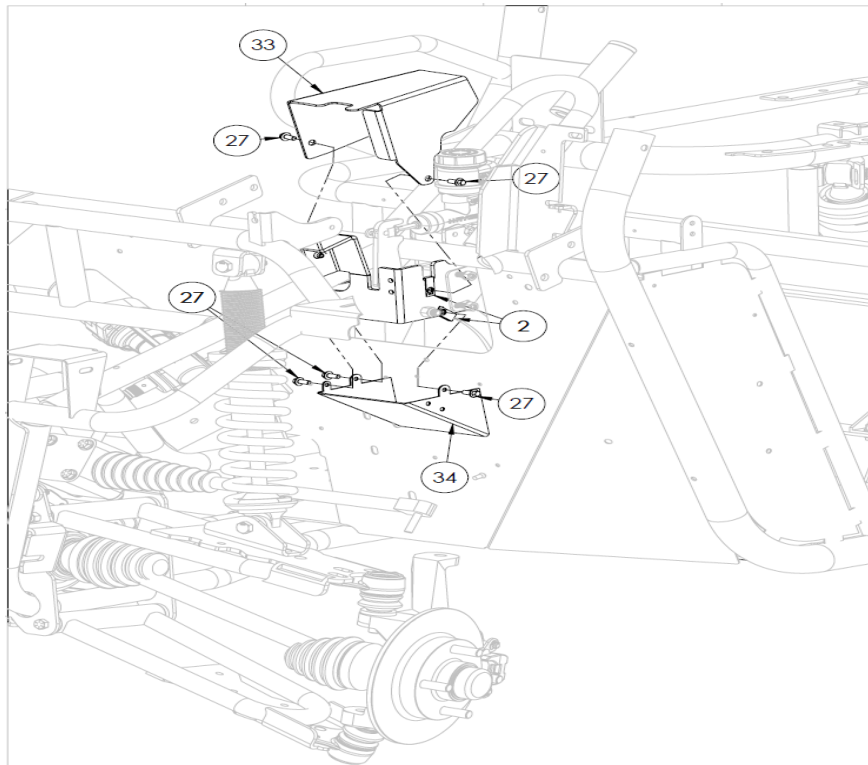


Figure 3: Removing Bolts from upper and lower brackets



- 4- Remove bolt and nut from the master cylinder bracket using 1/8" Allen wrench and 3/8" socket. See Figure 4.



Figure 4: Master cylinder bracket

- 5- Remove bolt and nut from pedal assembly cover using 9/16" socket and 9/16" wrench. See Figure 5.

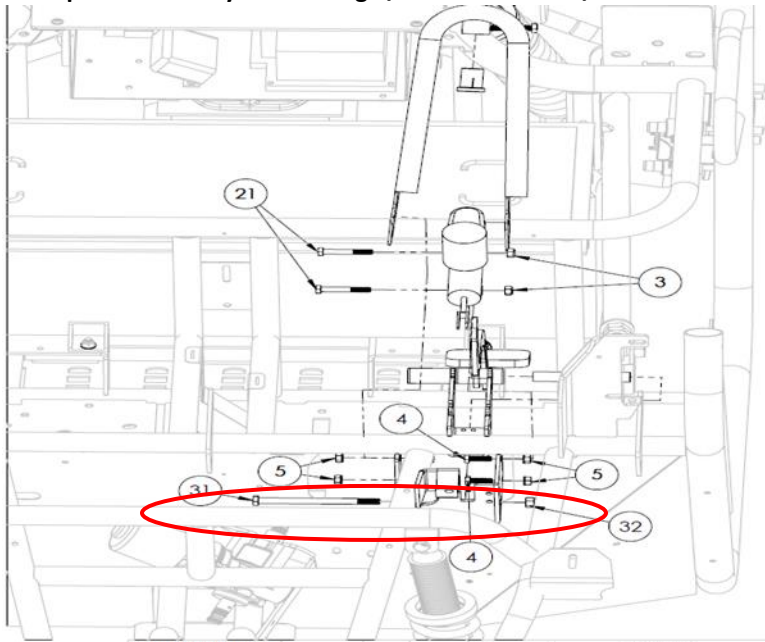


Figure 5: Pedal Assembly Cover

- 6- Remove pin from the Pedal Assembly. See Figure 6. Separate the pin from the brake pedal.

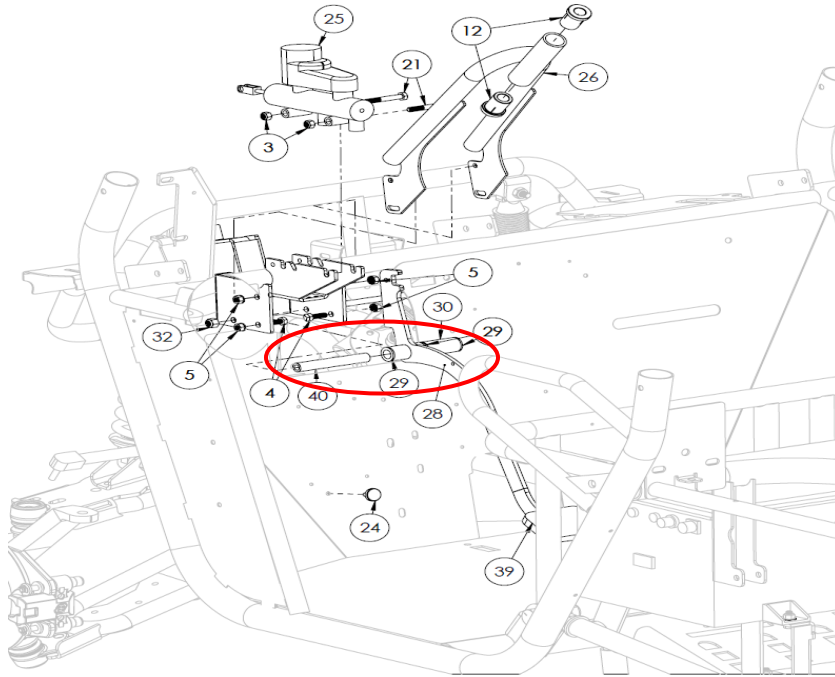


Figure 6: Removing pin

- 7- Remove spring attached to the brake pedal using a needle nose plier. See Figure 7.



Figure 7: Removing Brake pedal spring

- 8- Remove the brake pedal.

Brake Pedal Installation (EV only):



Figure 8 – Kit contents – Brake Pedal Assembly

- 1- Obtain the brake pedal from the CA00006-R kit.
- 2- Install the pin inside the brass bushing.
- 3- Position the brake pedal between the frame bracket.
- 4- Attach the spring to the brake pedal using the needle nose plier.
- 5- Insert the bolt shown in Figure 5 inside the pin and tighten the bolt and nut using 9/16" wrench and 9/16" socket.
- 6- Tighten the nut and bolt as shown in Figure 4 using 1/8" wrench and 3/8" socket.
- 7- Perform all brake system inspections to ensure the brake system is adjusted and operating correctly before the vehicle is returned to service.
- 8- Install the lower pedal guard bracket.
- 9- Install the upper pedal guard bracket.
- 10- Install the hood.

Disassembly Instructions (Gas only):

- 1- Follow steps 1-3 from Disassembly Instructions (EV only).
- 2- Using a 9/16" wrench loosen the nut on the throttle cable until it loosens the spring on the cable. Remove the throttle cable spring from the throttle pedal. See Figure 9.

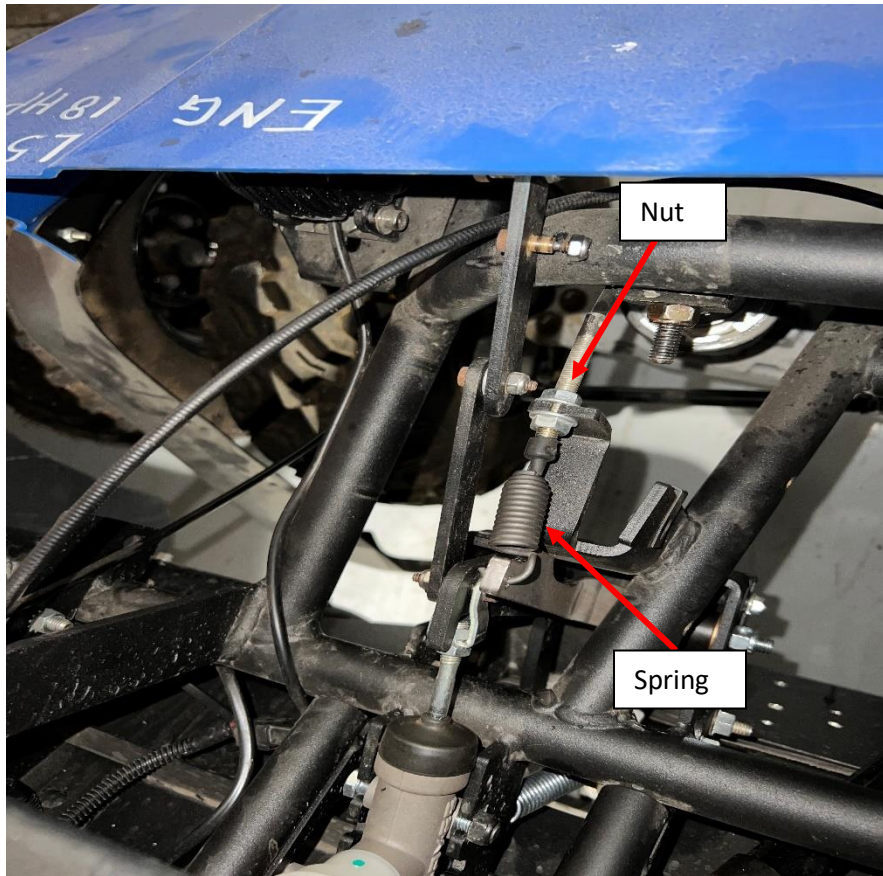


Figure 9: Removing Throttle cable spring

- 3- Follow steps 5-7 from Disassembly Instructions (EV only).
- 4- Remove spring attached to the brake and throttle pedal using a needle nose plier.
- 5- Slide out and twist the pedal to remove the pedal assembly from the frame.
- 6- Inspect the return spring. Replace the spring if it shows excessive wear.



Brake and Throttle Pedal Assembly Instructions (Gas only):



Figure 10 – Kit contents – Brake and Throttle Pedal Assembly

- 1- Obtain the brake and throttle pedal from the CA00005-R kit.
- 2- Install the pin inside the brass bushing.
- 3- Twist the pedal assembly to return the pedal assembly into the frame location.
- 4- Attach the spring to the brake pedal using the needle nose plier.
- 5- Attach the spring to the throttle pedal using the needle nose plier. Attach the Throttle cable spring to the throttle pedal and tighten the nut using 9/16" wrench.
- 6- Insert the bolt shown in Figure 5 inside the pin and tighten the bolt and nut using 9/16" wrench and 9/16" socket.
- 7- Follow steps 6-10 from Brake Pedal Installation (EV only).